



LCD5800D

www.banggood.com

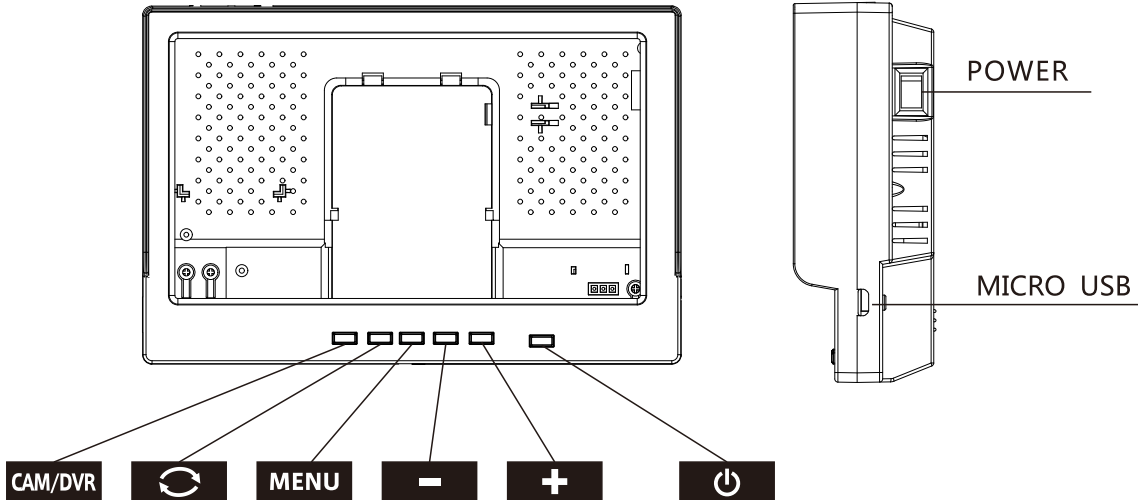


Product Parameters

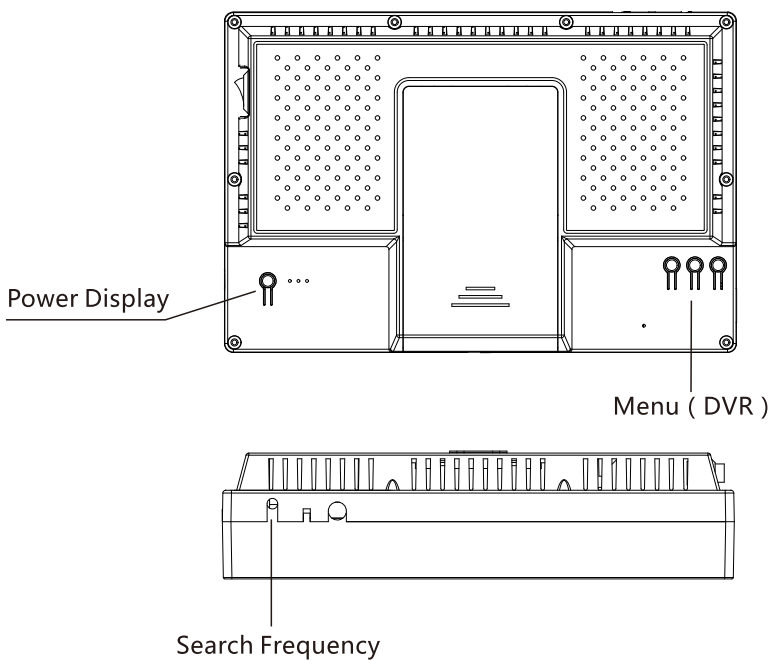
Size of LCD display: 7.0 inch
Resolution: 800 PIX X480PIX
LCM brightness: 450cd/m²
Visual angle: 140/120 degree(horizontal/vertical)
Receiving frequency: 5.8GHz.40 CH
Television system: AUTO
Sensitivity of wireless receiving: <-92dBm (15dBu V)
Antenna connector: SMAconnector
DVR video resolution:720P
DVR: Built-inTF card, 64G MAXvideotape, images can be acquired and recorded in real time(TF should be bought independently)
Back play support
Sound recording: Not supported
System lithium battery: 1300mA/7.4V (removable)
Automatic search signal: support
Charging interface: Micro USB (support portable source)
Standby current (6.2V—8.4V)
Working voltage: 2s 7.4V
Starting current: 980mA—740mA
Soft-offcurrent: 360mA—420mA
Hard shutdowncurrent:0mA
Standby time: 104Min

01

Button Interpretation



02



03

Default setting

Display mode: flip LD
Brightness: 50
Contrast ratio: 50
Chroma: 50
Tone: 50
Image proportion: 16:9
Language: ENGLISH

Key Functions

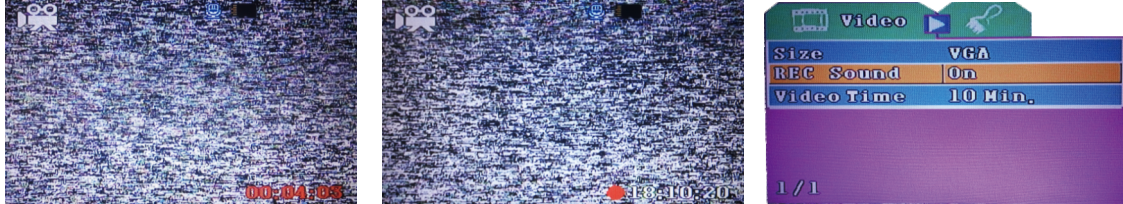
- 1 Toggle key of [CAM/DVR]:CAM mode and DVR mode. Switch once for each short press, cyclic switching.
- 2 [Rotating key]: conversion key for interface display mode, switch once for each short press, respectively:[normal plane display], [rotate 180° (RD)], [mirror (UL)], [mirror after rotating 180°(UR)]
- 3 [MENU]: switch for short press. Switch among nine menus of [brightness], [contrast ratio], [chroma], [tone], [image proportion], [flip], [language], [reset], [exit].
- 4 "+"、"-" key

04

- 4.1 Brightness interface: increase and decrease a unit of brightness by a short press of the "+" or "-" key, continuously increase and decrease for long press.
- 4.2 Contrast ratio interface: increase and decrease a unit of contrast ratio by a short press of the "+" or "-" key, continuously increase and decrease for long press.
- 4.3 Chroma interface: increase and decrease a unit of chroma by a short press of the "+" or "-" key, continuously increase and decrease for long press.
- 4.4 Tone interface: increase and decrease a unit of tone by a short press of the "+" or "-" key, continuously increase and decrease for long press.
- 4.5 Image selection interface: switch between the two modes 【16:9】、【4:3】 by a short press of the "+" or "-" key.
- 4.6 Flip interface: implement the previous or next function by a short press of the "+" or "-" key, switch between the four interfaces of LD, RD, UL, UR.
- 4.7 Language selection interface: implement the previous or next function by a short press of the "+" or "-" key, switch between the ten languages of ENGLISH, DEUTSCH, FRANC, ESPANOL, PORTUG, ITALIAN, ENGELS, pyCCK, Chinese and Japanese.
- 4.8 Reset interface: enter to the brightness, contrast ratio, chroma, tone recovery, default setting

05

- by a short press of the "+" or "-" key.
- 5 Power button: start-up for a short press, shut down for another short press(note: such a shut-down only closes the display, 300mA power consumption still requires)
 - 6 Electricity display button: display current electricity for a short press, the more electricity, the more lights on.(three lights for more than 8V electricity, two for 7—8V, one for less than 6.8V)
 - 7 Search key: search one by one frequency for a short press; automatic search and stay in the searched frequency for a long press.
 - 8 Functions of DVR button:



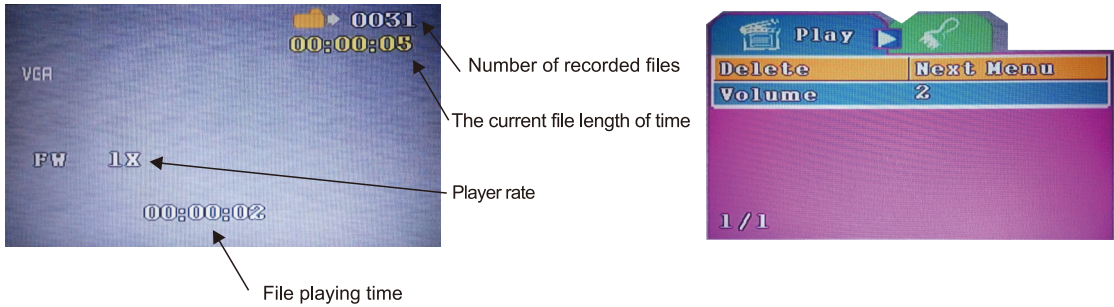
06

- 8.2 [Menu]: enter the video interface for the first long press, enter the setting interface for another long press, exit the menu and return to record interface for the third long press
- 8.2.1: video interface: include three options of [size], [video sound],[cycle recording]. Enter the submenu by shortly pressing the menu button, switch between submenus by the button [Prev] and [next], then confirm by shortly pressing the menu button again. When staying in a submenu interface, every long press will return to the top level menu until exiting the video menu and return to setting menu.
- 8.2.2: Setting interface: include five options of [format], [language], [reset system], [optical frequency] and [video output format]. Enter the submenu by shortly pressing the menu button, switch between submenus by the button [Prev] and [next], then confirm by shortly pressing the menu button again. When staying in a submenu interface, every long press will return to the top level menu until exiting the setting menu and return to recording menu.



07

- 8.3 [Next] button: enter the folder saving of recording files by a long press. Switch between various recording files by shortly pressing the button [Prev] and [next], play the file by shortly pressing the menu button(when playing, short press of the button [Prev] and [next] can rewind and fast forward, a short press means the speed X2, two short presses means the speed X4, three short presses means the speed X8, four short presses means back to normal), another short press means a pause, a third short press means recovering the play. Enter the playback interface for a long press(files can be deleted in the playback interface), another long press of the menu button will exit to the setting interface, a third long press of the menu button will exit to folder saving interface of recording files. Then, press the [prev] button to exit the older saving interface of recording files and return to recording interface, select among all submenus by shortly pressing the button [Prev] and [next], and confirm by a short press of the menu button.



08