

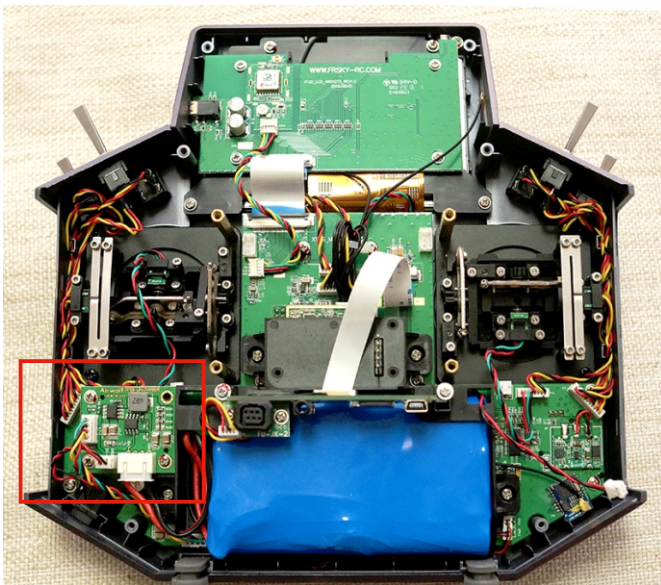
# DIY X12S CHARGER USER GUIDE



## Basic performance

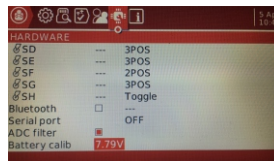
Module	
Input Voltage:	9-20V
Input Current on:	≧ 0.5A
Input Capacity:	≧ 9W
Charge Current:	≈ 1A
Size:	36mm * 31mm
Weight:	6g
Battey	
Model:	2S4P-14500
Can Material:	Nickel-plated steel
Typical Capacity:	3600mAh
Nominal Voltage:	7.40V
Max Charge Voltage:	8.40V
Discharge Cut-off Voltage:	6V
Max. Charge Current:	1C
Size:	100mm * 58mm * 15mm
Weight:	167g

## Very easy replace the original module

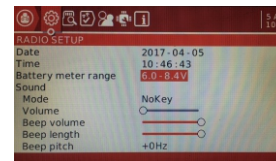


## Change Settings on OPENTX

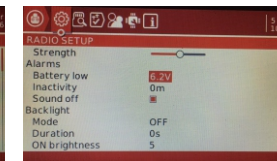
- 1) Calibrate the battery voltage
- 2) Set battery meter range: 6.0-8.4V
- 3) Set alarms of Battery low: 6.2V



Step 1



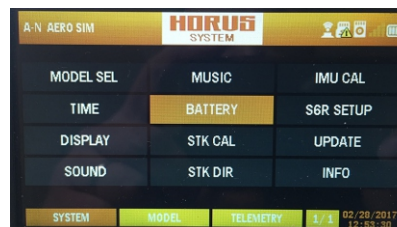
Step 2



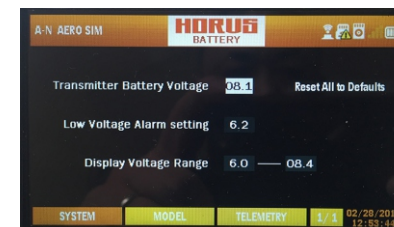
Step 3

## Change Settings on Frsky TX OS

- 1) Calibrate the transmitter battery voltage
- 2) Set display voltage range: 6.0-8.4V
- 3) Set low voltage alarm setting: 6.2V



Step 1



Step 2

## The LED signal (Charge indicator light)

- Green LED normally on: Is charging
- Green LED off: Charging completed
- Green LED flashing: There is an error, please check the connection line, to avoid short circuit