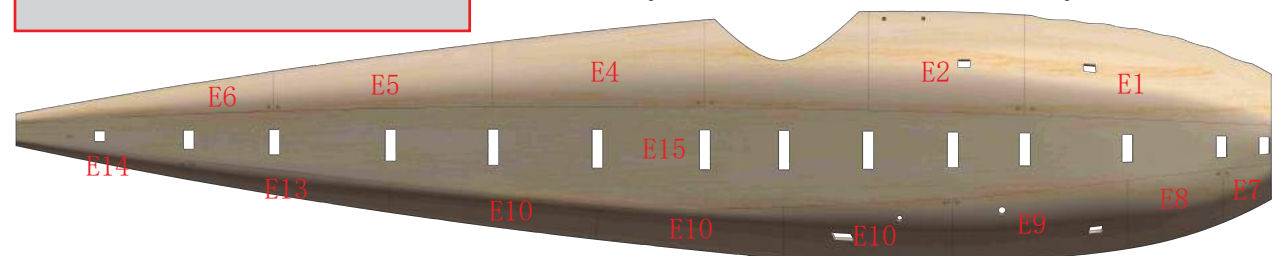
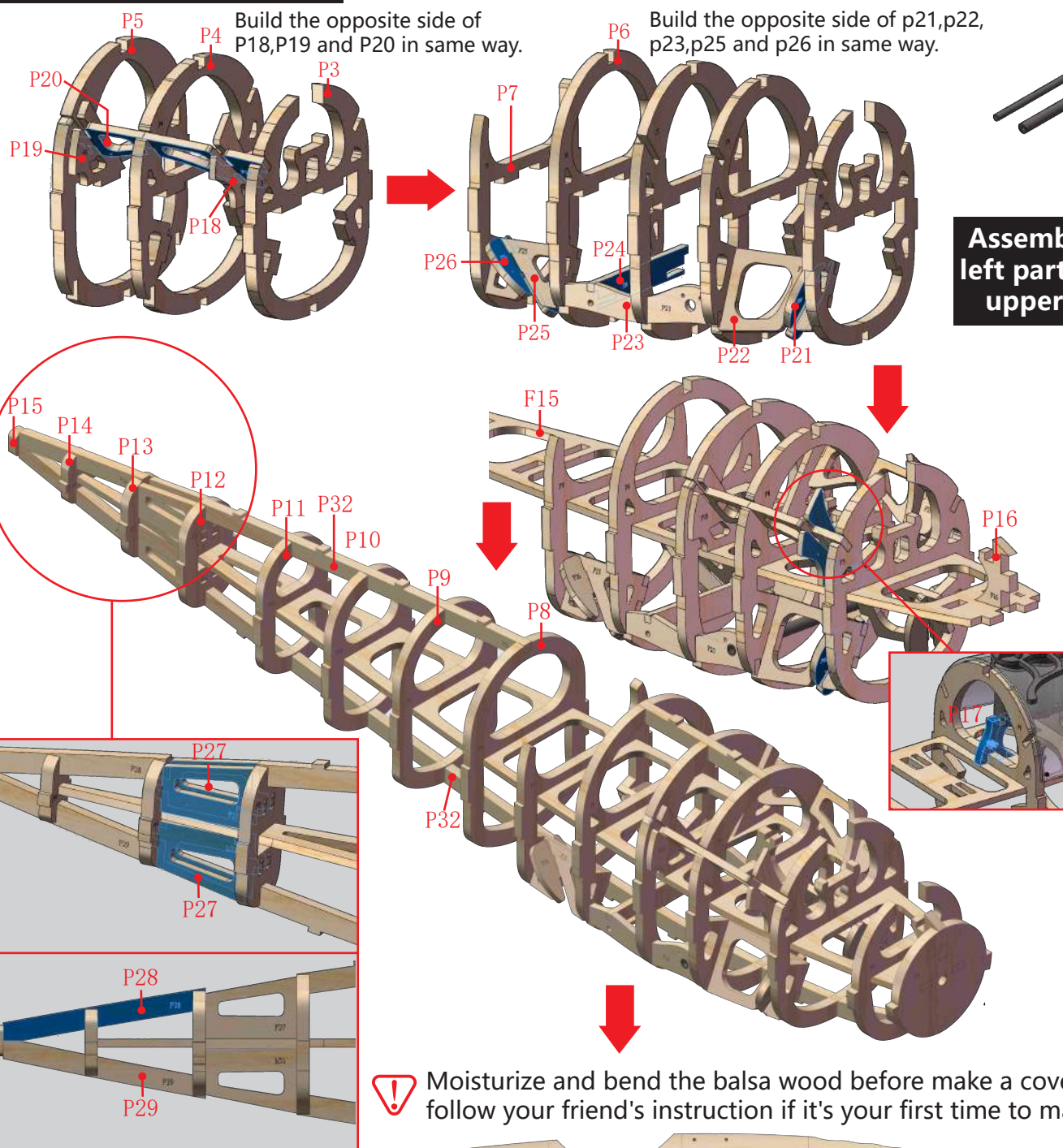


Specification
 Wingspan:492mm
 Length:410mm
 Package Weight:500g

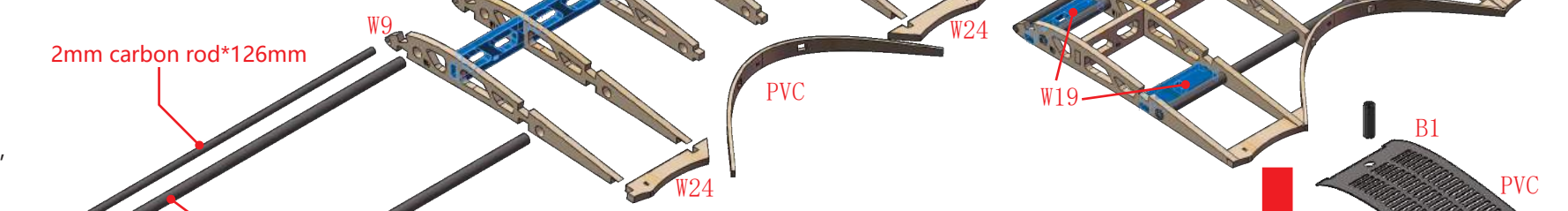
Tools Needed



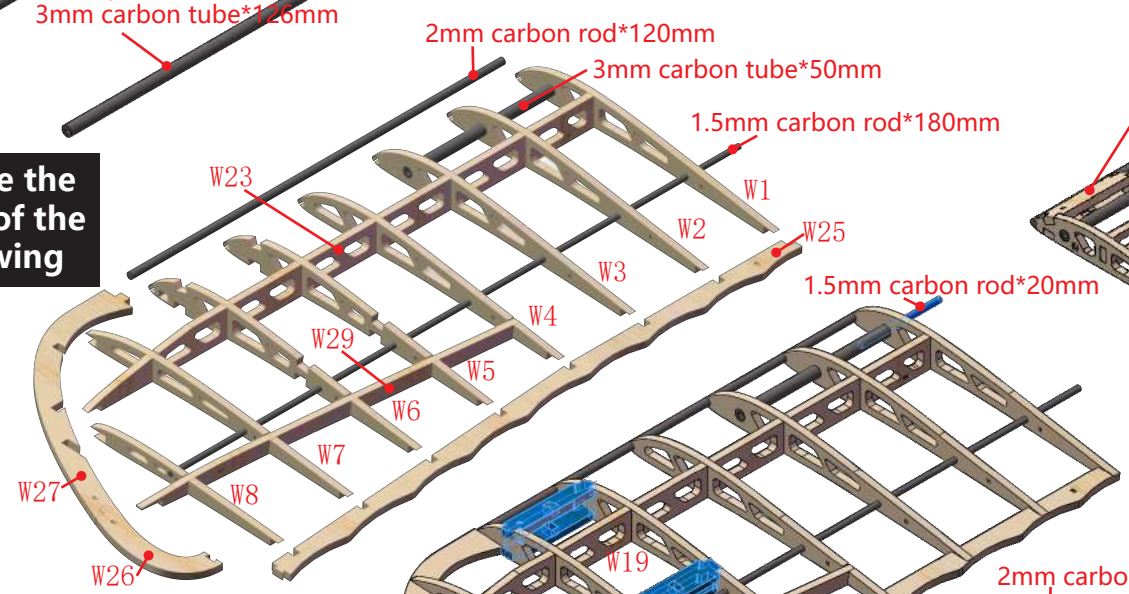
Assemble the Fuselage



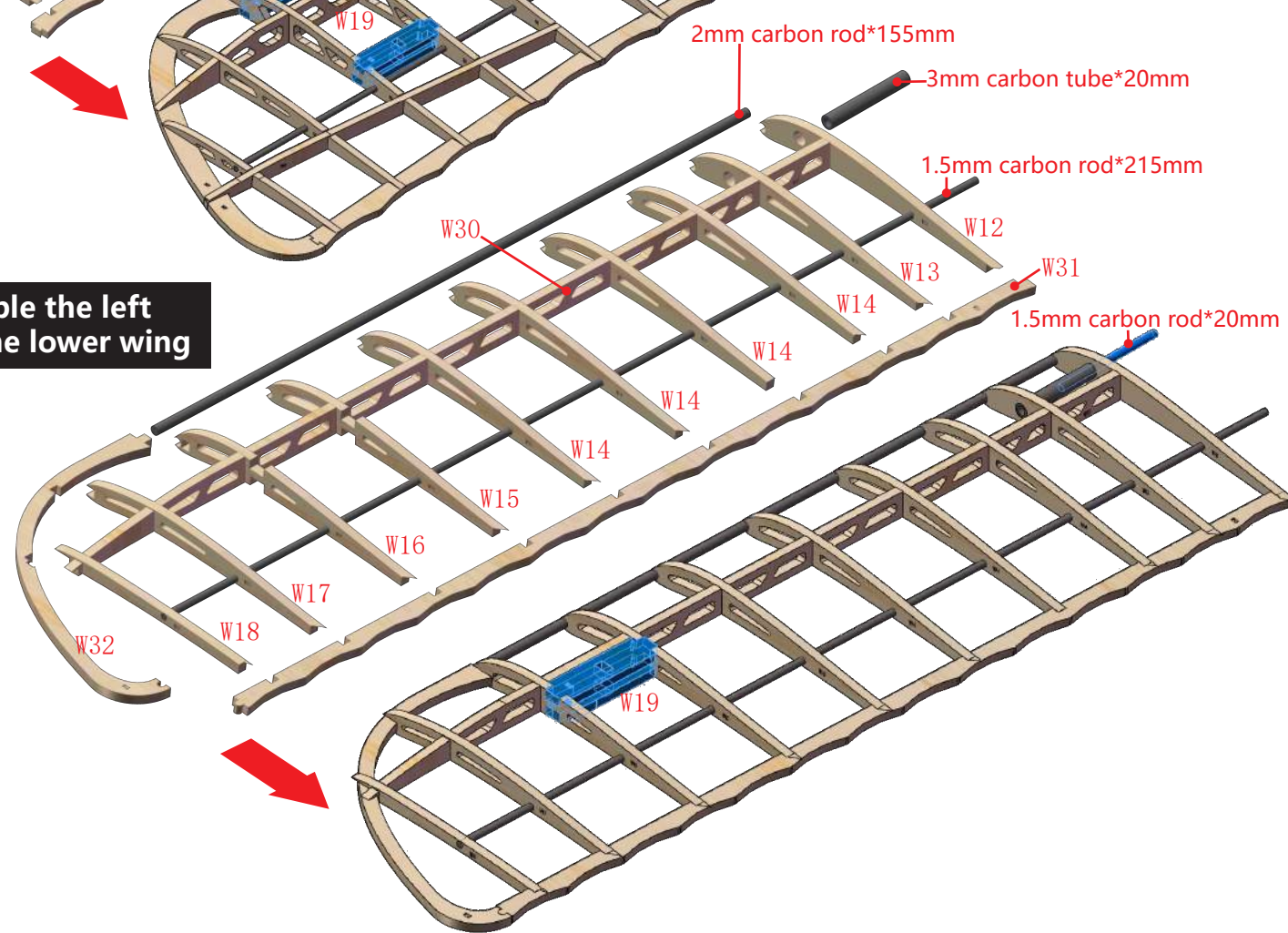
Assemble the middle part of the upper wing



Assemble the left part of the upper wing

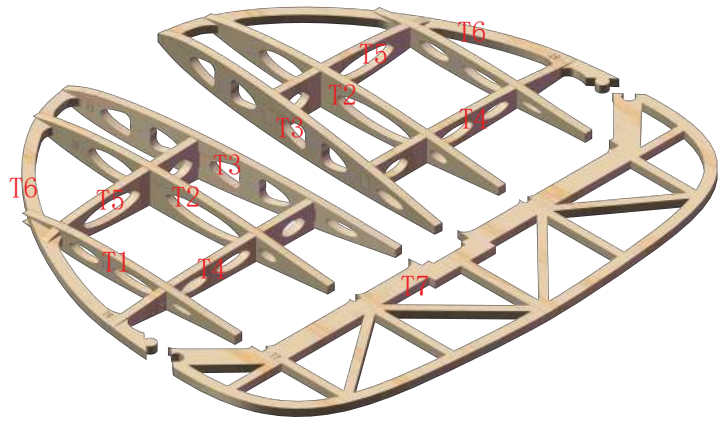


Assemble the left part of the lower wing

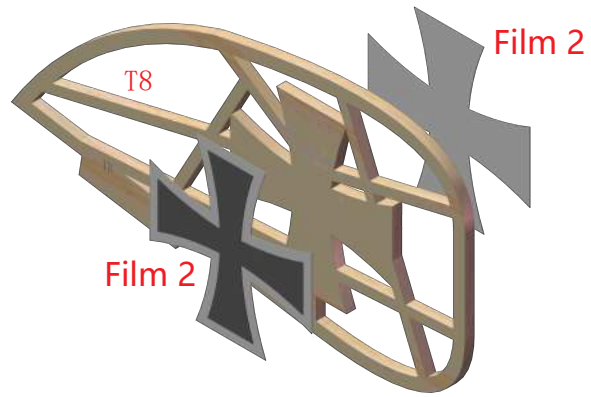


scale radiator

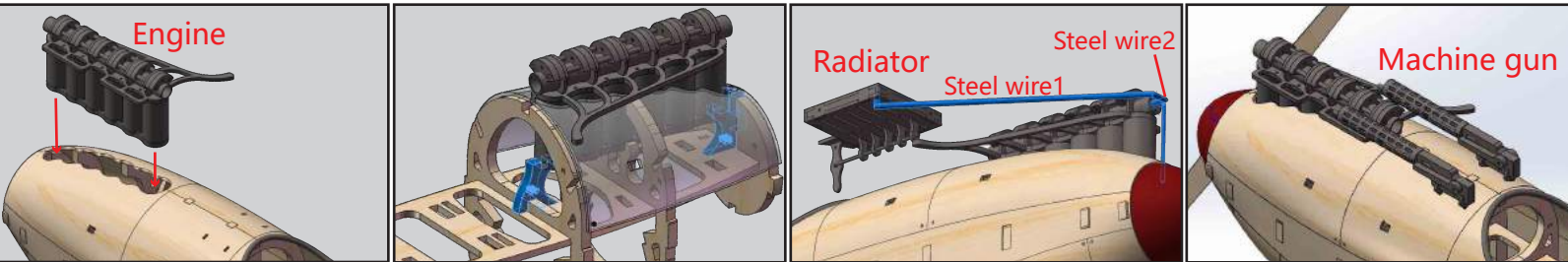
Assemble the horizontal tail



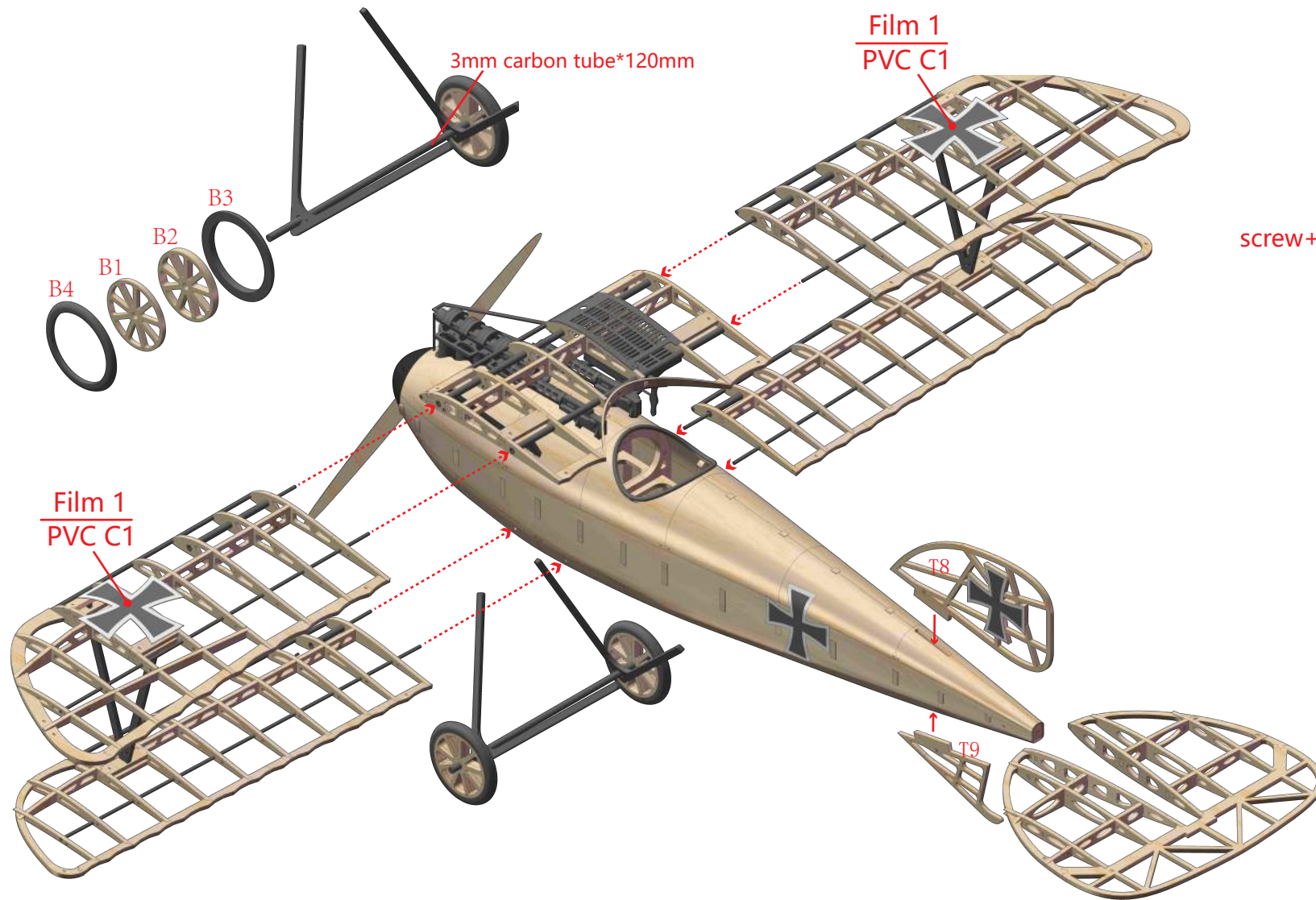
Assemble the vertical tail



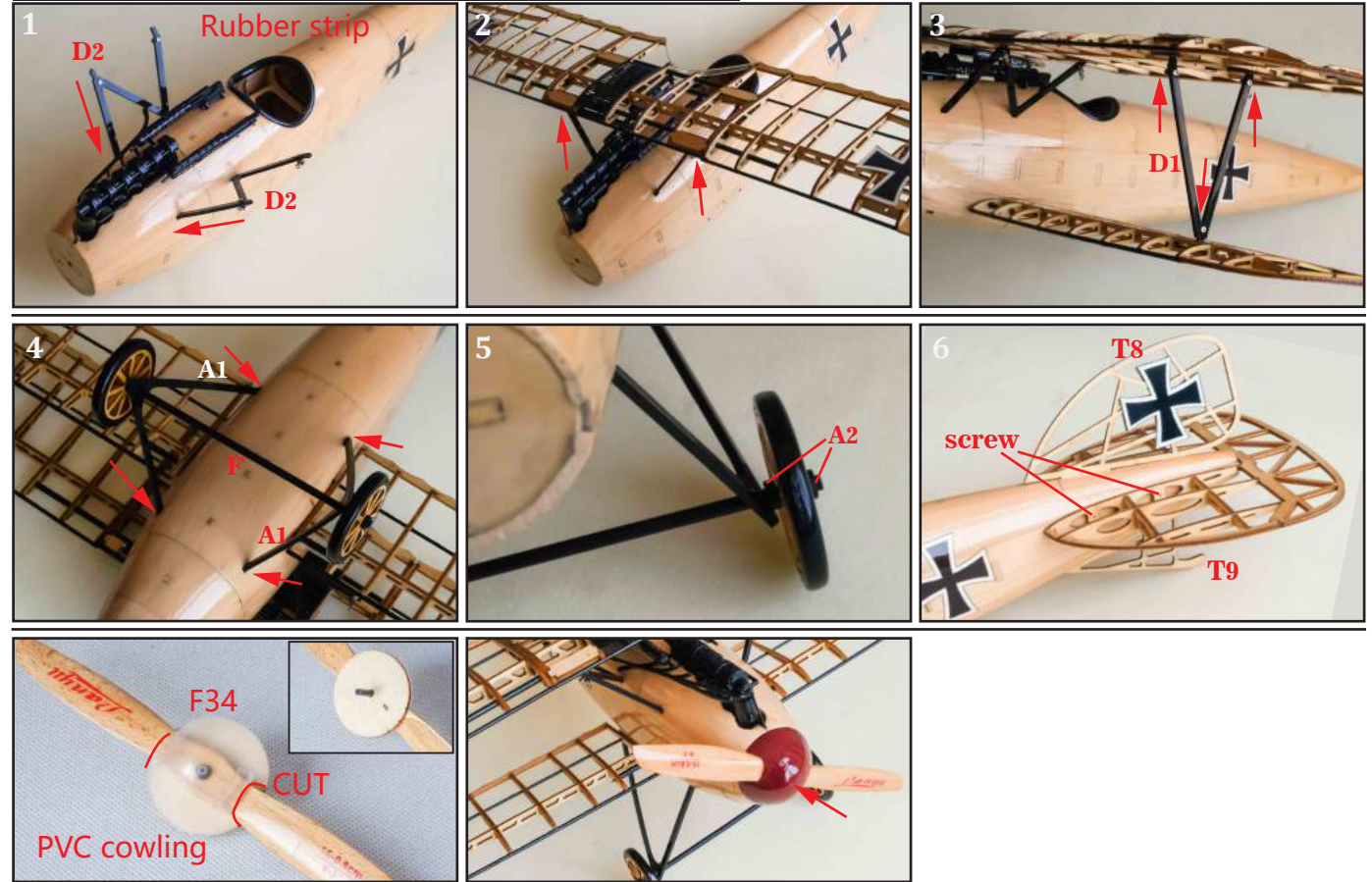
Assemble the scale parts



Assemble the landing gear and wheels

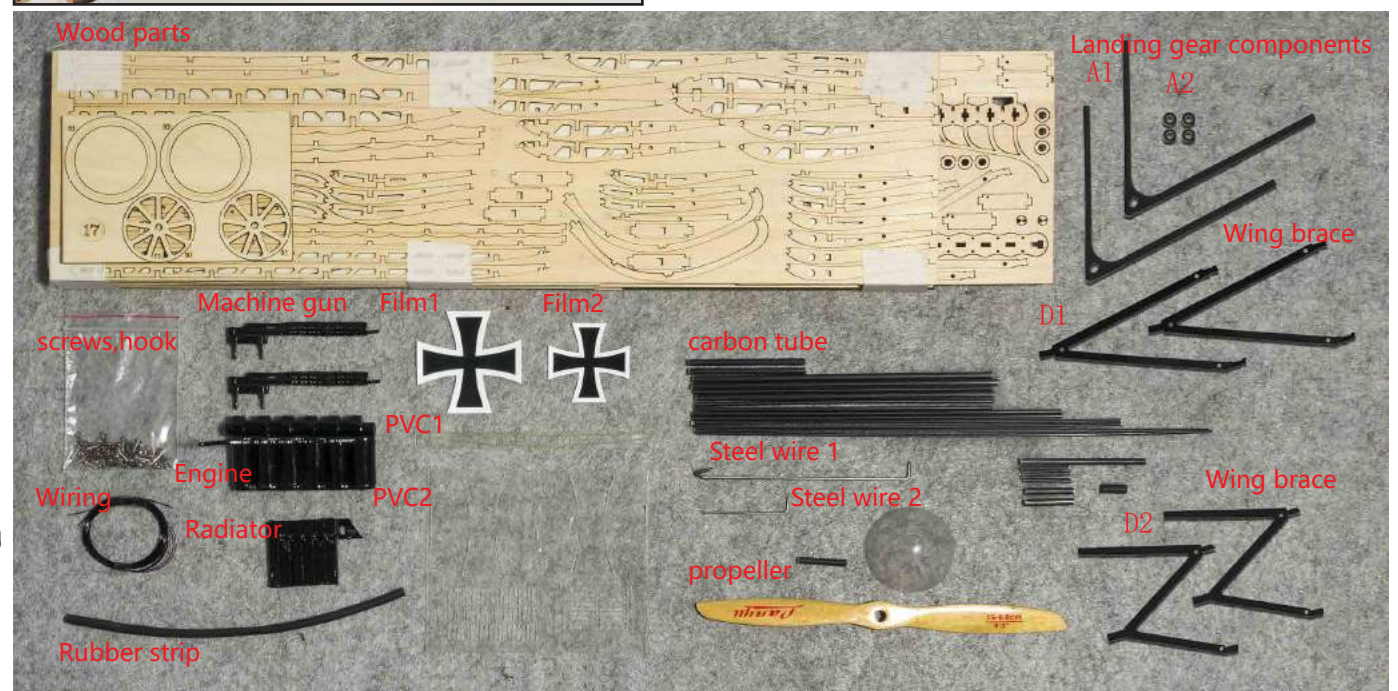
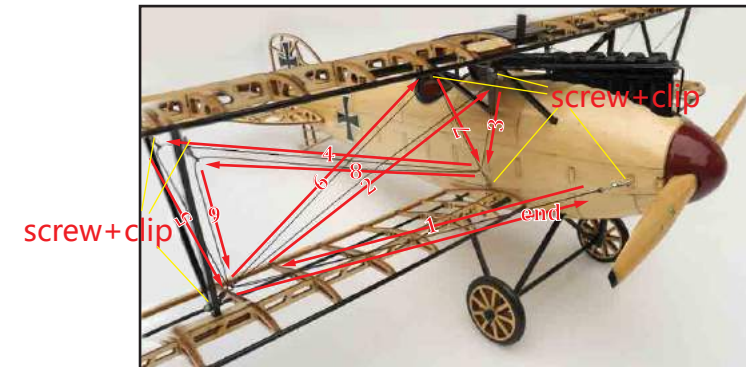


Assemble the components as picture shown



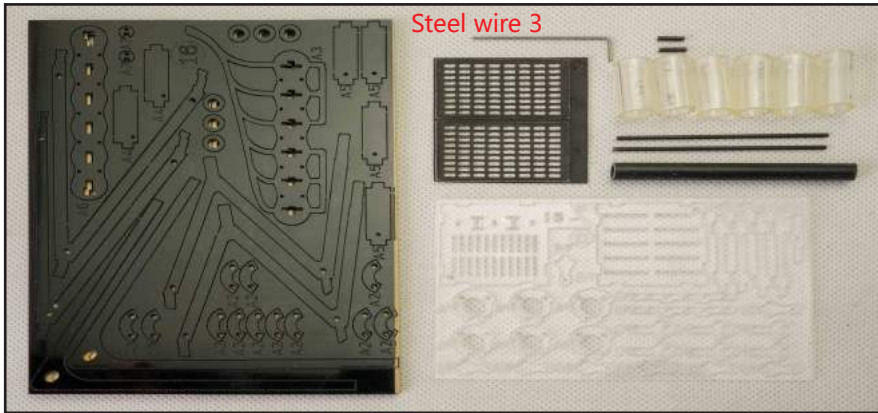
Make the wiring

Make the wiring the other side in same way



Albatross D.III German Fighter

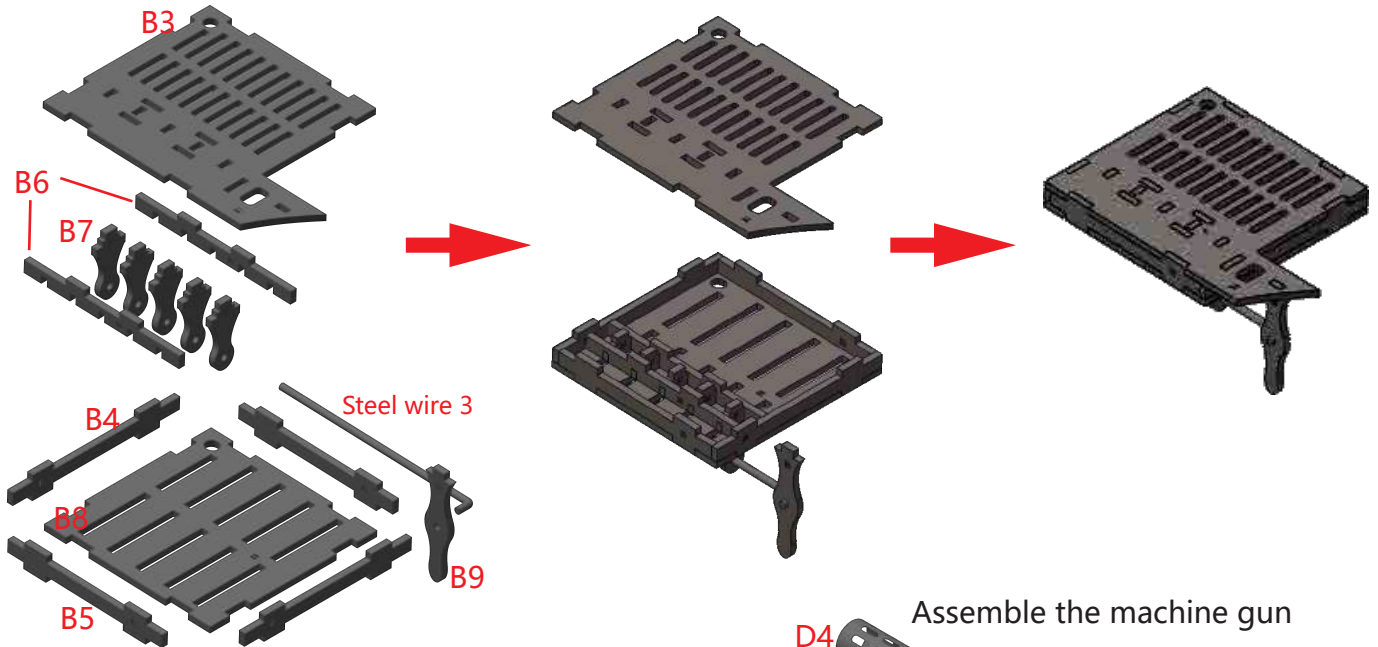
Assemble the scale parts



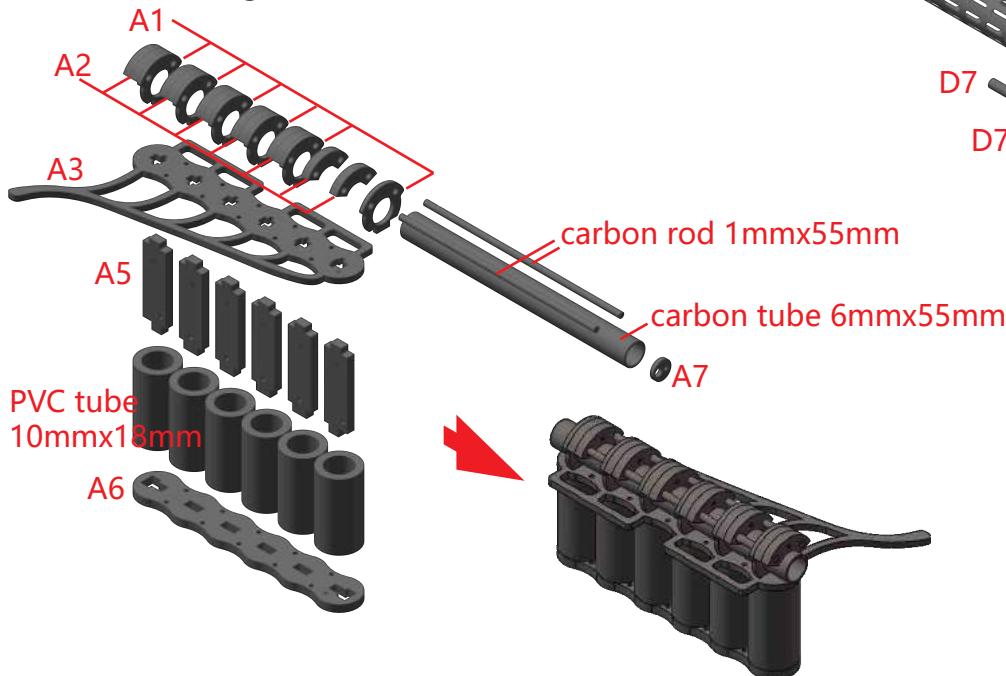
Tools Needed



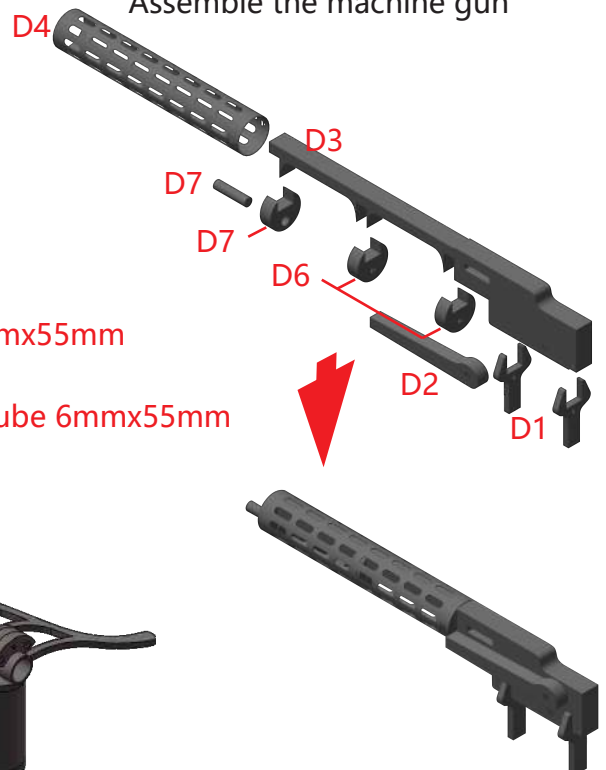
Assemble the radiator



Assemble the engine



Assemble the machine gun



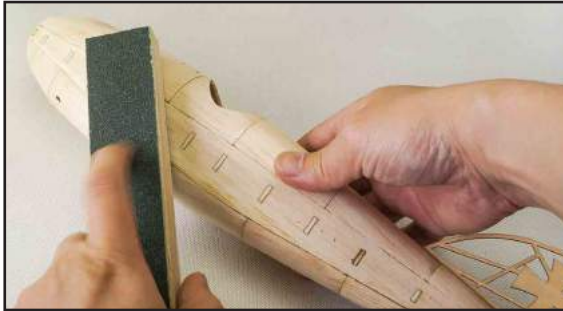
Color and paint the scale parts once assembled

Instruction for painting and polishing



Fill the fuselage gap

Fill and glue the gap with spare balsa wood once finish the fuselage cover.



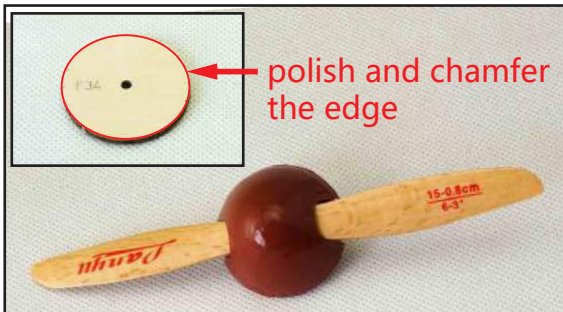
Polish the fuselage body

Fill the gap and polish the fuselage body with sand paper until the whole fuselage becomes smooth.



Paint the fuselage

After polishing,pls paint the fuselage (we recommend to use the spray paint).Pls guarantee the painting is even,polish again once the primer get dry,finally paint again (We recommend to paint 2-3 layer).



Compose the propeller

Polish and chamfer the F34,make sure it perfectly suits the spinner; Cut the spinner into suitable size and paint,finally paste together the three parts.



Polish the wheel

Polish the wheel edge with radian and paint black.



Display the wiring

Fasten the wiring hooks on the fuselage with self-tapping screws,and fasten the wiring hooks on the wing brace with scew nuts.