

G.T.POWER[®]

Aircraft Simulated Sounds System Manual



Thanks for purchasing G.T.POWER product of Aircraft Simulated Sounds System. This System has the stronger Sounds Synthesis and High-efficiency amplifier. Equip with the fantastic loudspeaker box which can bring to the perfect and simulated effect. Please read the manual carefully before using and keep it well after using.

Contents

1. Products list	1
2. Specification	1
3. Connecting Instruction	1
4. Loudspeaker installation	2
5.Attention	3
6.USB Setting	4
7.LED Status	6
8.Operation	7
1.Normal Mode	7
2.Calibration Mode	7
3.USB Mode	8
4.Sounds choice setting	8
9.Warranty and Service	8

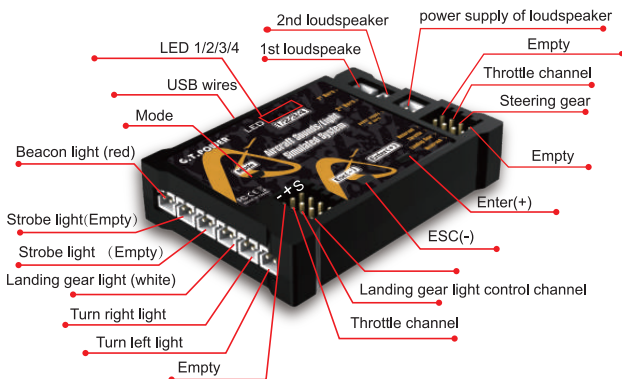
1. Products list

- 1.Aircraft simulated sounds system control mould x 1pcs
- 2.Plane special resonance speaker x 2pcs
- 3.ESC connect cable x 2pcs
- 4.Micro USB data cable x 1pcs
- 5.Power cable x 1pcs
- 6.5mm white LED x 2*2 pcs 5mm red LED x 2pcs 5mm green LED x 1pcs
- 7.Accessory bag x 1pcs
- 8.Double-sided fixed tape x 2pcs
- 9.Manual x 1pcs

2. Specification

- 1.Input voltage: 4.5-6V, Speaker power supply:6-26V
- 2.Max power: 30W
- 3.Loudspeaker size: cable 20cm, 2.0JST-XH connector, 44*15mm

3. Connecting Instruction



Input channel:

From up to down:

- 1.Empty
- 2.Throttle channel (Receiver)
- 3.Landing gear light control
- 4.Empty

Output channel

From up to down:

- 1.Empty
- 2.Throttle channel (electrically controlled)
- 3.Steering gear channel
- 4.Empty

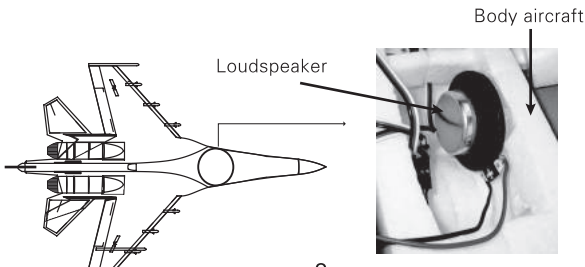
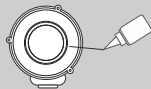
4.Loudspeaker installation

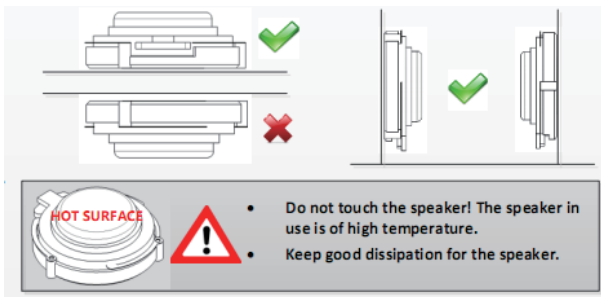
1. Clean the surface to which the speaker is pasted and press when you paste. For better bonding, allow for 24-hour standing. Recommendation: Use glue to paste the vibration ring.
2. Install the loudspeaker as horizontally as possible. If two speakers are used, keep a distance between them.
3. Paste the vibration ring to the flat surface of the aircraft model. Ensure that the ring is concentric.
4. The materials and size of the mounting surface influence the sound effect. Choose the most appropriate mounting position before fixation.



Installation

Use appropriate bonding glue(e.g.zap) to paste the Vibration ring to the aircraft model based on the material of the surface. High-quality bonding can enhance the sound effect!





Please use the speakers produced or recommended officially. Non-certified speakers can be problematic.

5.Attention

Use glue to stick the loudspeaker (positive) in the inside of the aircraft, and make sure it won't fall off.

Please assemble it according to the manual strictly and keep it stable and safety.

Alarm in low voltage: Open the low voltage alarm, when the voltage lower than setting the lowest voltage, then the first LED and the third LED will flash.(blue and red LED flash)

To avoid damaging the loudspeaker, please turn down the sounds to minimum when use it for first time or re-setting.

To make the perfect simulated effect, please do not put the objects which have strong distribution around the loudspeaker.

It should be calibrated the controller when use it in the first time or change to another controller.

6.USB Setting

1.The device support update settings by computer software, please visit our website (<http://www.gt-rc.com/en/nr.jsp>), and download the latest PC-side software, or connect the device to the computer, double clicking to install the PC software in the SD card of the device (file name: RC_Aircraft_Simulator_1.0.0.msi).

2.After completing download and installation, connect the device to the computer, long press “ESC” to enter the USB mode; using the software “Aircraft Sound Simulator”, can set the information of device, for example, the engine sound, battery, lights.

At the same time you can visit our website, checking for the latest device firmware and PC software, keeping the latest firmware version can get the newest function that we offer.

3.We update the sound without a fixed schedule, you can download the installation packages on our website, after installing, open the “Aircraft Sound Update”, and update the newest sound.

4.If the device does not work when you update the device firmware, at this point, you can power on it under the circumstance of holding down “Mode”, then open the PC software, In the detection of the recovery mode of the device, you can use the firmware update function to update the firmware.

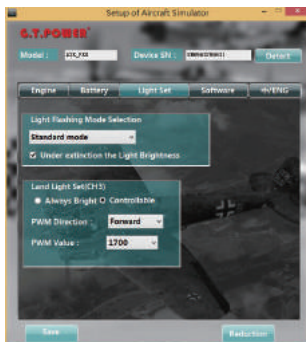
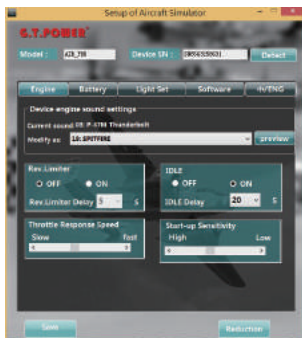
5.About the software function explanation:

(1).Equipment engine sound Settings: Through the computer software to change device engine sound effects is the same as pressing “Mode” to change it. The former is more convenient and intuitive, the latter can be use offline.

(2).Auto Start-Stop: After you start the sound system, if the throttle on the minimum status, the plane is stationary and the engine in the idle state, then when you open the automatic start-stop system, the sound system will automatically switch off after time delay according

to the timing that you set. The engine will restart only when you touch the throttle again, you can also choose to shut down, but the sound system will work all the time when the engine is working.

(3)The sensitivity of starting: lower sensitivity can prevent the mistake starting when the controller and the throttle rocker occur slightly touched. If sound equipment start and your aircraft start are out of sync, you can try to adjust here.





7.LED Status

1.Standard light mode (Default), the LED flashing according to the diagram below:

LED status Aircraft status	Beacon light (red)	Strobe light (white)	Landing gear light (white)	Left wing light (red)	Right wing light (green)
the startup state	Flash slowly	Flash quickly	Normally on(controlled)	Normally on	Normally on
stalled state	off	off	off	off	off

- 2.Blasting flash mode: All the LED flashing together at a fast pace.
- 3.Normally on mode: All the LED light up together.
- 4.Slow flash mode: All the LED flashing together at a slow pace.
- 5.Switch off: All the LED lights go out.

8.Operation

1.Normal mode

Power on it, push the throttle to the minimum, the first LED flashing, then working ok.

Push the throttle to forwards, the Motor running, after finish the sounds of throttle switch on, the motor will make a sound to match the rotation rate of the motor according to the single source of the throttle. At the same time, the LED of the device will show the status of the speed of revolution. 2pcs Blue LED and 2pcs Red LED lighting at the same time, it means that the throttle in maximum. Short press “Enter” to turn up the sounds of the motor, and short press “Esc” to turn down the sounds.

2.Calibration Mode

Long press “Enter”, then the loudspeaker will sound “Bee” for a little long time , LED 1 lighting constantly, and enter to the calibration mode.

After the LED 1 lighting constantly, push the throttle to the minimum position, short press “Enter”, it will finish the setting of minimum position after LED 2 lighting constantly.

After the LED 2 lighting constantly, push the TH trigger to max throttle position , short press “Enter”, LED 3 and LED4 lighting constantly, Max TH calibration finishes.

After the steps above, the loudspeaker will sounds “Bee”, if the operation failure, then sounds “Bee, Bee, Bee”, then it should be calibrated it again.

In any case of the calibration mode, it can stop calibration mode and enter to the normal mode after long press “Esc”, then the loudspeaker sounds “Bee, Bee, Bee”.

3.USB Mode

In normal mode, it will enter to the USB mode after long press

“Esc”. Then the loudspeaker sounds “Bee, Bee”, and LED 3 flashing.

It can update the sounds file and information when connect the computer to USB port. And it will stop to the USB mode when long press “Esc” or plug out the USB connecting cable.

4.Sounds choice setting

In normal mode, it will enter to the sounds choice mode after long press “Mode”, then the loudspeaker will sounds “Bee” “Bee”.

After that, it will play the pre-listening effect of current sounds.

It can adjust the current sounds according to short press “Enter” and “Esc”. For each time to adjustment, the loudspeaker will play the pre-listening effect for current chose sounds. Short press the “Mode” to confirm and withdraw the sounds choice mode after adjustment.(Use PC to adjust the group number will be more convenient, achieved the same effect.)

9.Warranty and Serviceion

According to the regulation on what you buy our products warranty is 1year (from the date of invoice). During the warranty period, any belongs to under normal use due to the product itself quality problem caused by the fault, the company will be responsible for giving free maintain.

1.During the warranty period, any belongs to the product itself quality problem caused by the fault, as long as you with the purchase documents (invoice or receipt) can free repair or replacement. But as a result of wear and tear, overload, use of improper operation or parts of human error caused by the damage, is not be repaired or replaced.

2. Don't accept due to the modified without authorization or other function machine malfunction after loading.
3. Please refer the invoice once altered, not be warranty.
4. Please safekeeping your receipt, lost not fill.