

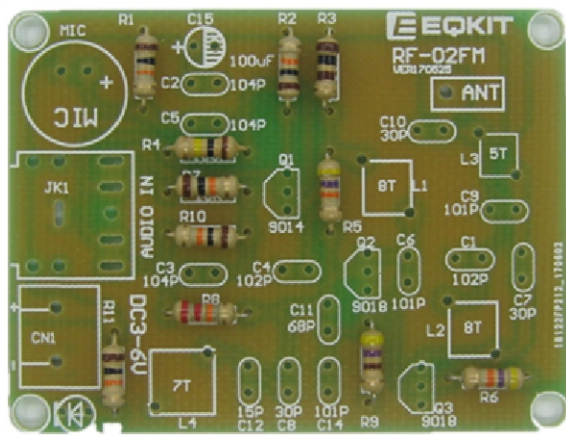
Tools you need:

- ① Iron (30W)
- ② Solder wire
- ③ Multimeter
- ④ Tweezers
- ⑤ Wire cutters

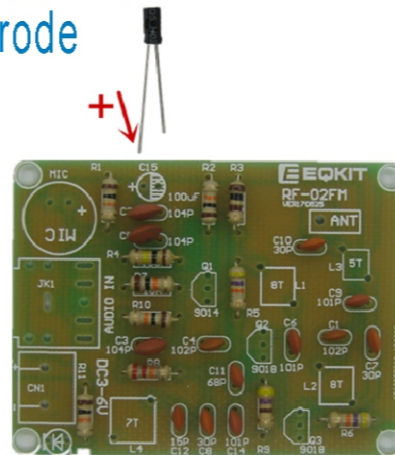
Precautions:

- ① Check part values & quantities against part list
- ② Always meter resistor values before soldering
- ③ Understand all part polarities and orientations

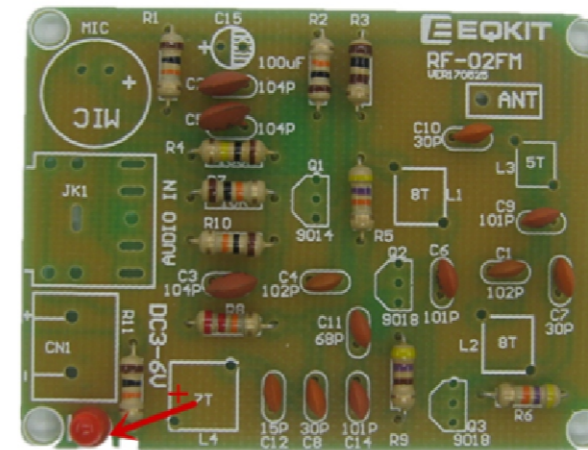
1. Install resistance:



2. Install capacitor and electrolytic capacitor: Be careful electrolytic capacitor C15 positive electrode

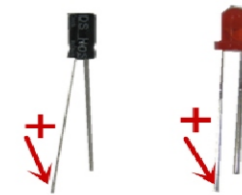


3. Install LED.

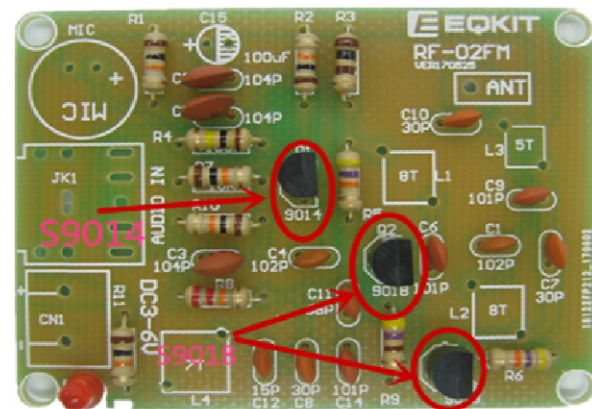


warning

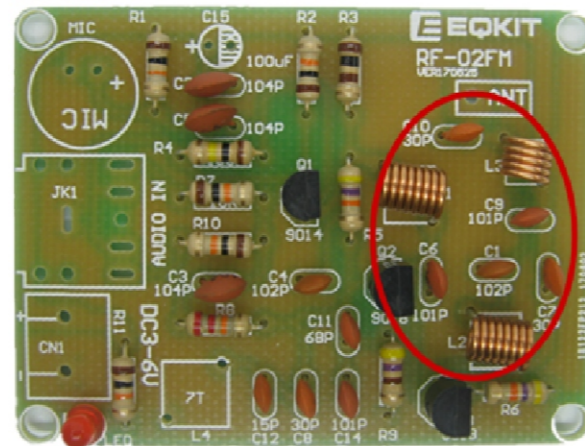
Light-emitting diode and electrolytic capacitor the longer pin is the anode it should be installed on the rectangle pad of PCB:



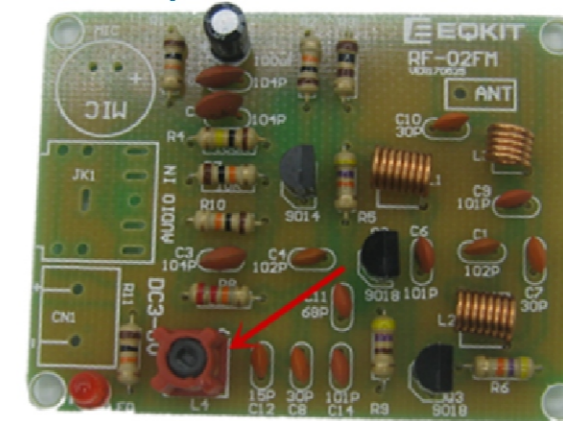
4. Install triode : S9014 to Q1 , S9018 to Q2 and Q3.



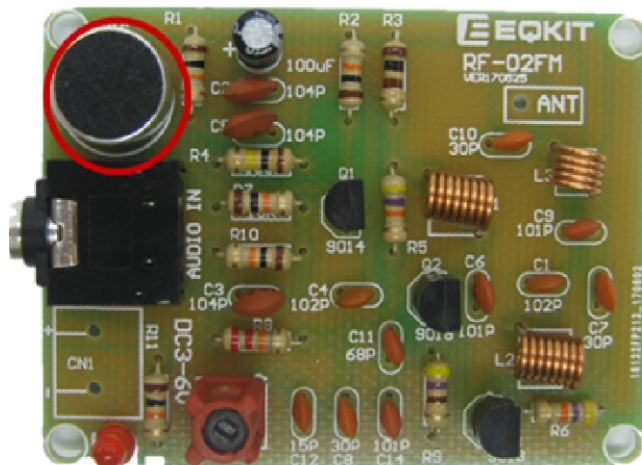
5. Install inductance : 8T to L1, L2. 5T to L3



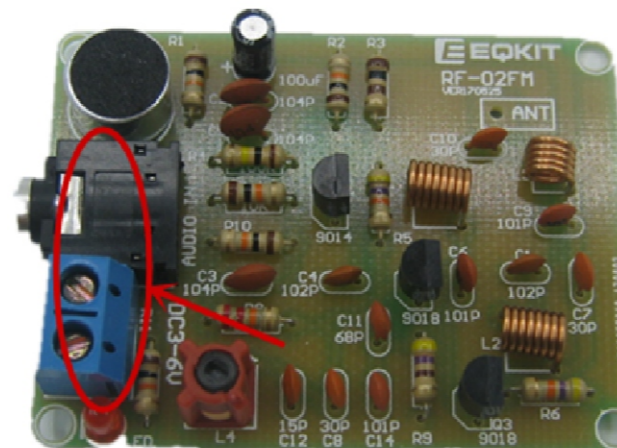
6. Install L4 Closely next to PCB



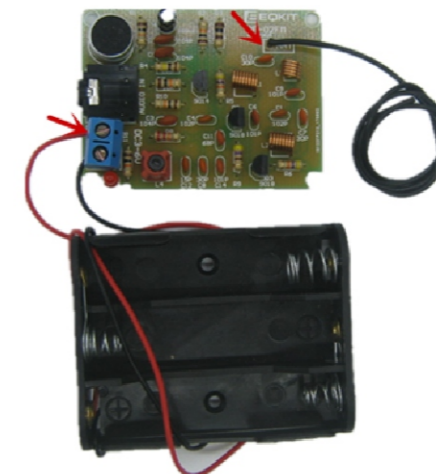
7. Install electret microphone



8. Install audio input socket and power input socket



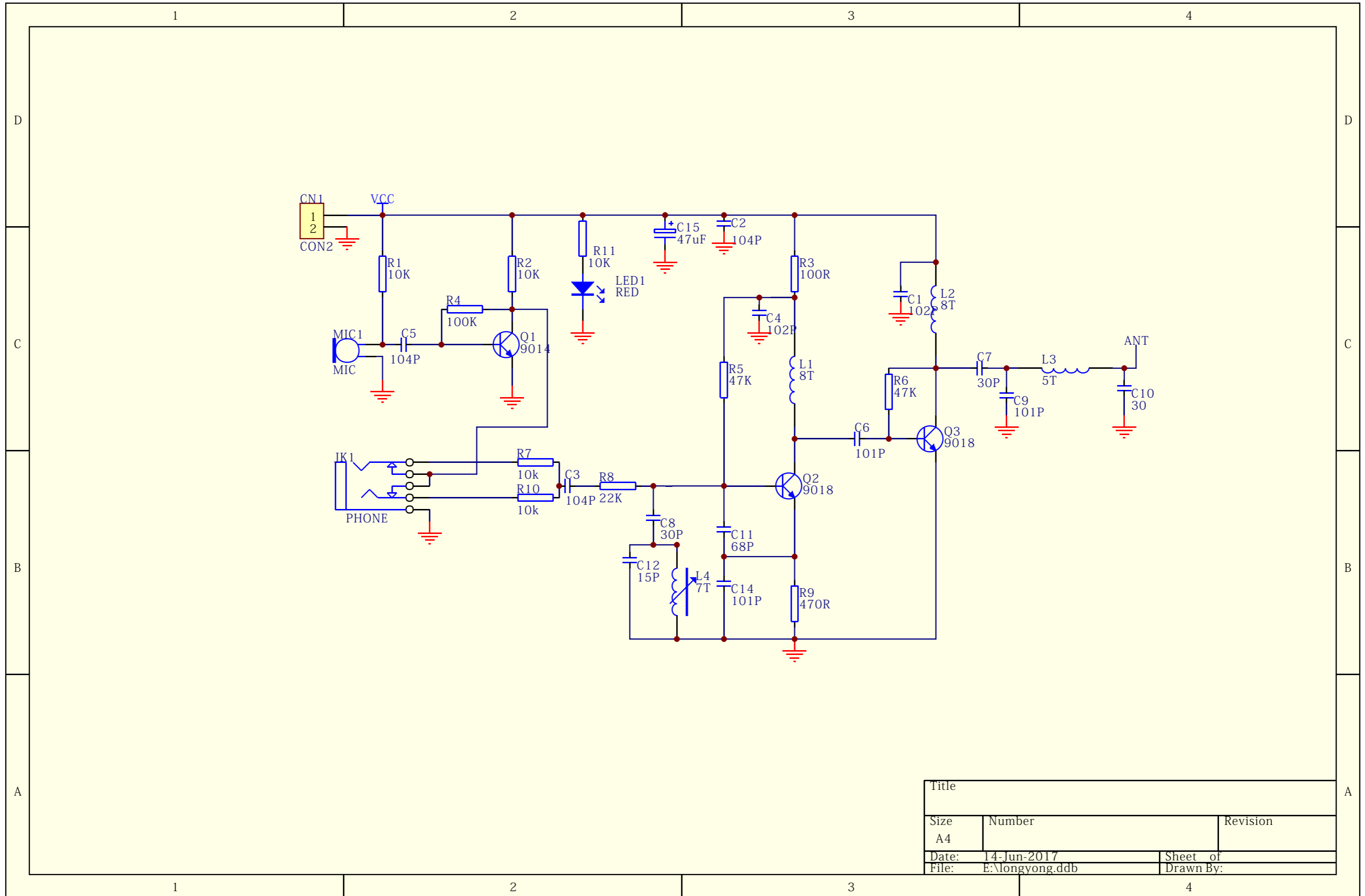
9. Install antenna and battery box :



RF-02FM Wireless launcher component list

NO.	Name	Mode	QTY
R1, R2, R7, R10, R11	RES	10K	5
R3	RES	100R	1
R9	RES	470R	1
R8	RES	22K	1
R5, R6	RES	47K	2
R4	RES	100K	1
C1, C4	Cap	102P	2
C2, C3, C5	Cap	104P	3
C6, C9, C14	Cap	101P	3
C11	Cap	68P	1
C7, C8, C10	Cap	30P	3
C12	Cap	15P	1
C15	E. C	100uF	1
Q2, Q3	Triode	S9018	2
Q1	Triode	S9014	1
LED	LED	RED3mm	1
L4	Inductor	7T	1
L3	Inductor	5T	1
L1, L2	Inductor	8T	2
JK1	Audio input	5P	1
MIC	Microphone	F10*H7mm	1
CN1	Socket	KF301-2	1
ANT	Wire (Give)	300mm	1
—	PCB	RF-02FM	1

Schematic



Title		
Size	Number	Revision
A4		
Date:	14-Jun-2017	Sheet of
File:	E:\longyong.ddb	Drawn By: