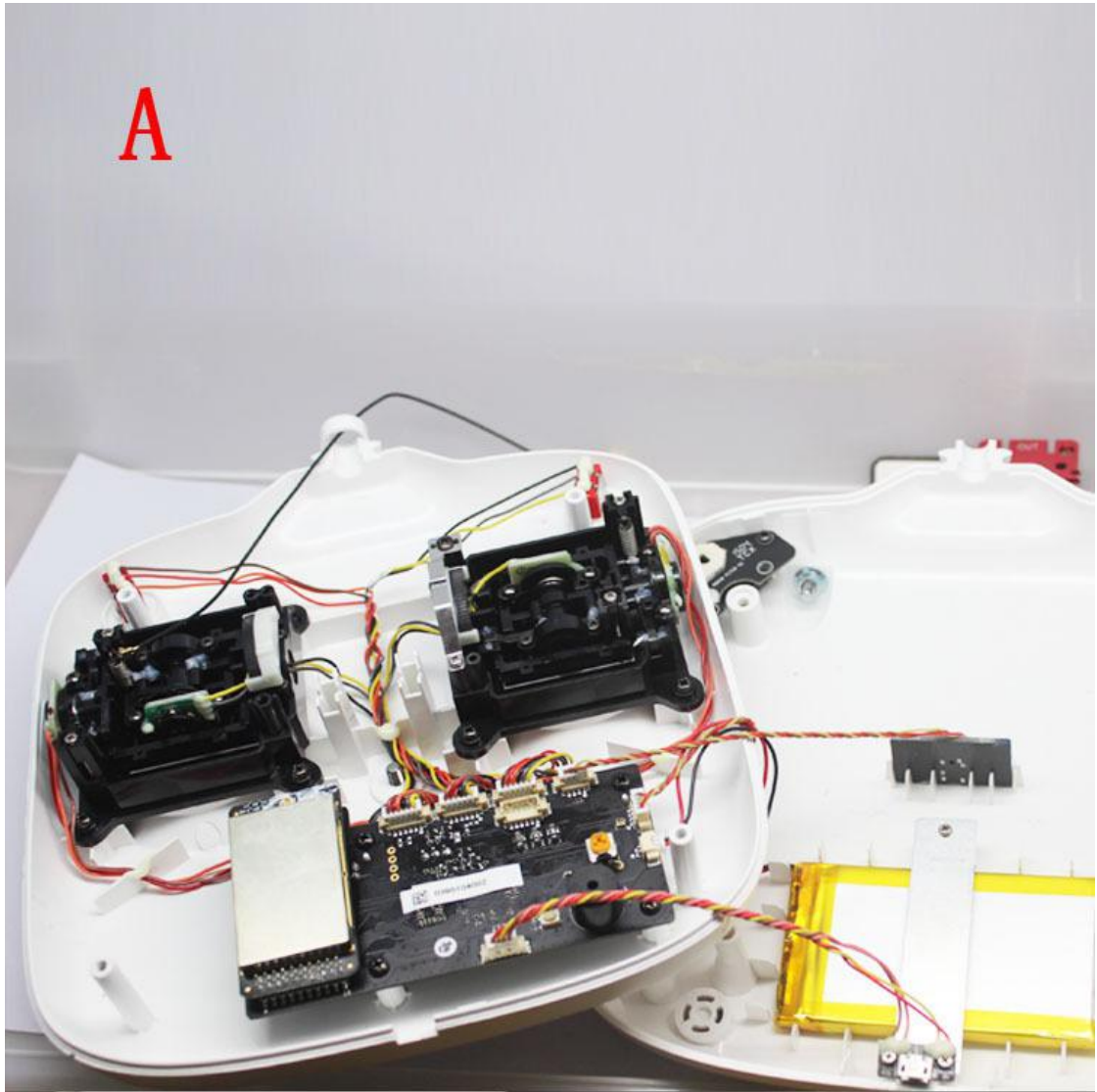


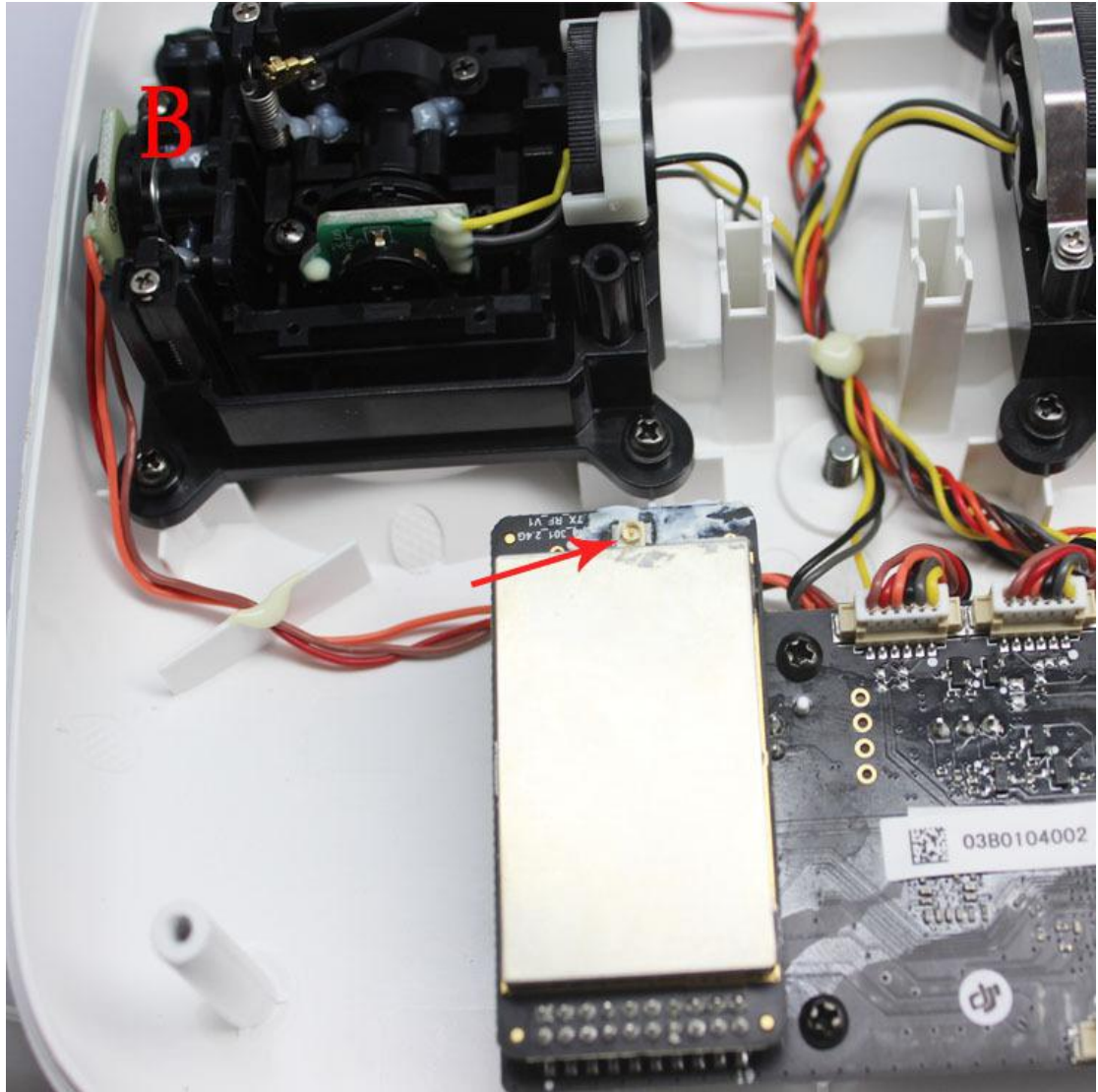
# Install Manual

Take 2.4G DJI remote control as example

1. Remove wireless AP/Router power supply.
2. Remove wireless AP/Router antenna.
3. Connect the bidirectional amplifier RFIN terminal and the wireless AP / Router antenna terminal with the standard RG316 feeder.
4. Rotate the antenna to the RF OUT port of the bidirectional amplifier.
5. Supply power to the two-way amplifier first, and then supply power to the wireless AP / Router.

A





C



D

