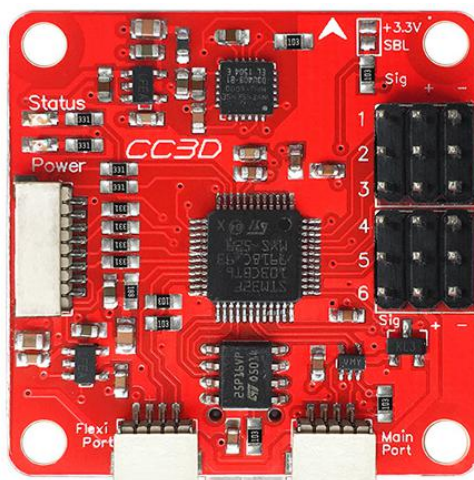


CC3D 飞行控制器板



1. Introduction

CC3D flight controller board is an open source UAV flight control board, is easy installation. At the same time, it contains a variety of interfaces to support more remote control and equipment.

The CC3D and Atom boards are the stable hardware for all the functions of the firmware that it runs in OpenPilot. It can fly any body from fixed wing to octocopter, and is configured and monitored with OpenPilot Ground Control Station (GCS) software.

Specification

Size: 37 * 36 * 13mm

Weight: 7.1g

2. Use the OP Ground Station to update the firmware

1) ready to CC3D OP BOOTLOADER firmware referred to as OP firmware, file extension is. BIN, such as bl_cc3d.bin;

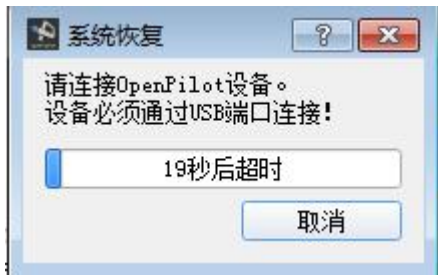
2) After installing the OP ground station, double-click the following icon to start the ground station;



And then click the red box into the CC3D OP ground station FIRMWARE;

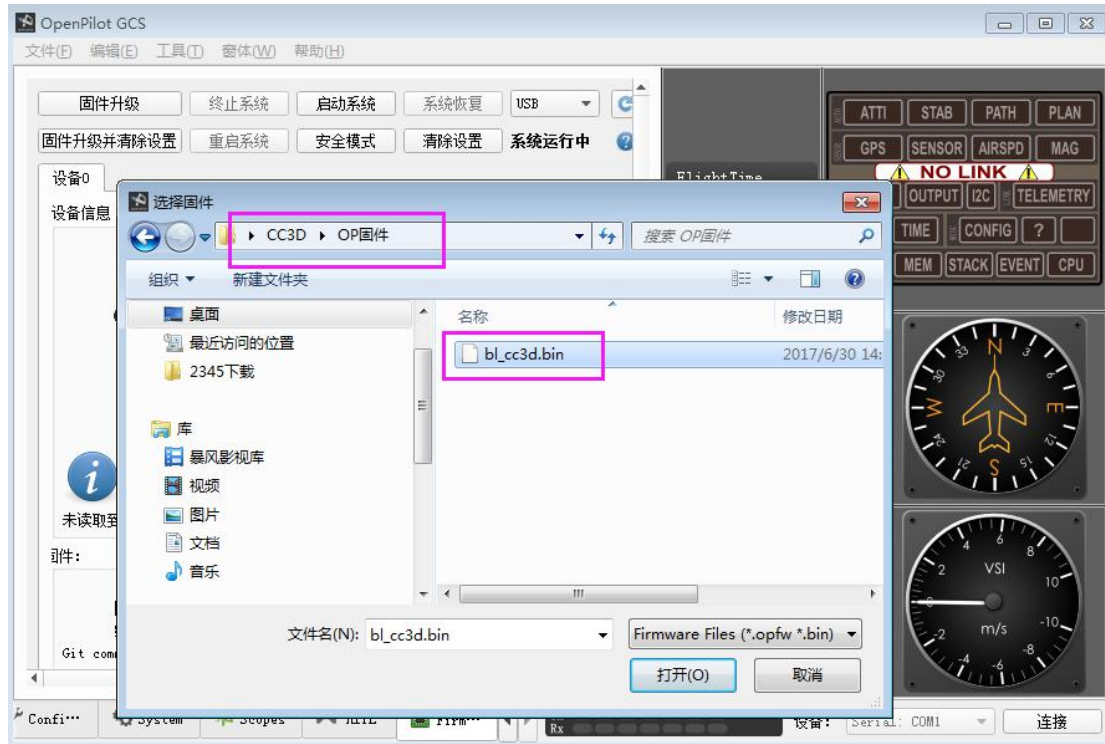


To connect to the computer via the USB cable before the end of the progress bar, if the timeout occurs, repeat it again;



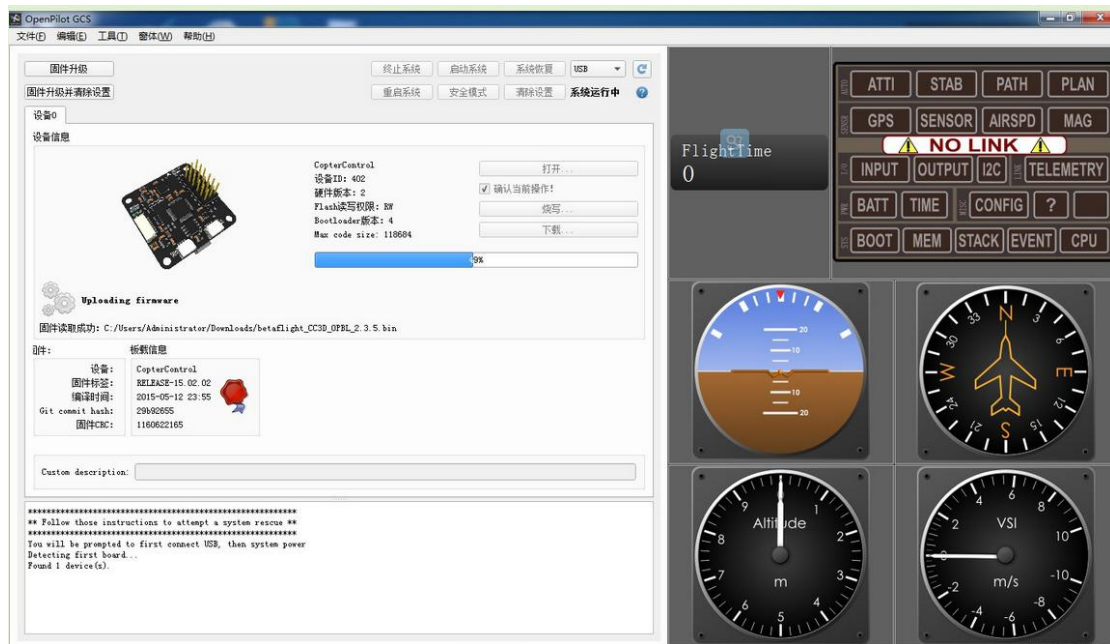
After successful connection, the following interface will be displayed. Click open, select and open the corresponding .bin file, for example, bl_cc3d.



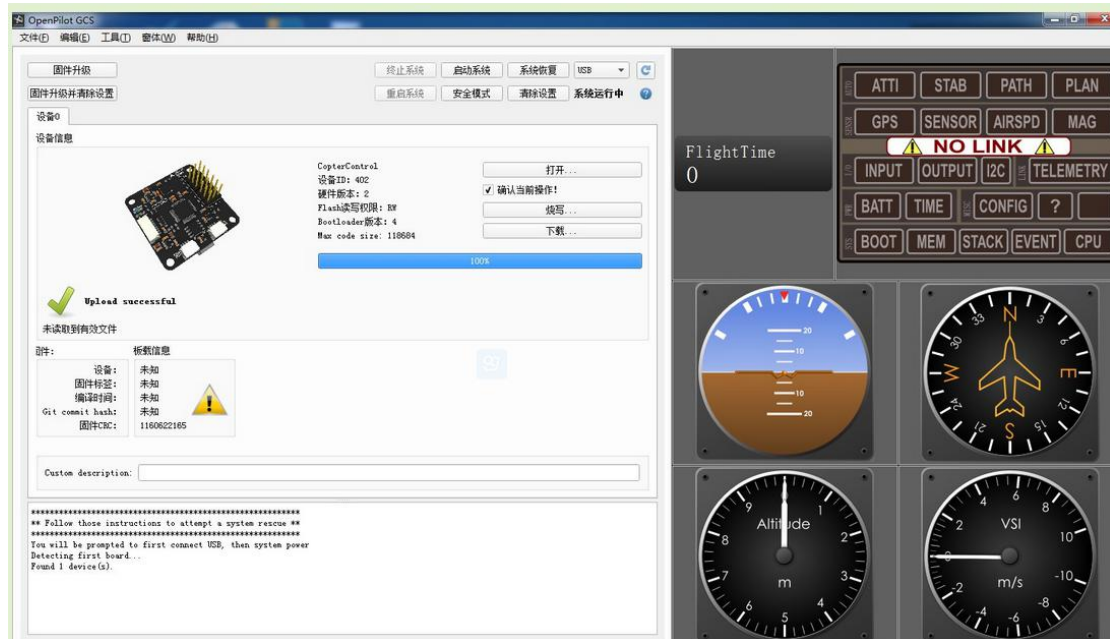


As shown in the figure, select "confirm the current operation", then ignore the warning prompt "programming", then the progress bar will appear, indicating that the brush is started, don't move the USB cable now.





If normal, you can see the end of the progress bar, and the instructions are finished.



4. CC3D Operating status description

- 1) Normal working mode: yellow light is always bright, blue light is slow to work indicator light, fast flash means that the flight control has been on the power and the normal start-up is completed, now the system is working;
- 2) BOOTLOADER mode: the yellow light is always bright, the blue light is slowly from bright to dark or from dark to bright. Now the flight control work is in the BOOTLOADER mode;
- 3) Error status or mode: yellow light is always bright, and blue light fast flashing during the BOOTLOADER upgrade means that there is an error, which may be loaded to

a wrong upgrade file and not properly write;

4) Fly control not work: yellow light is not bright, meaning flight control power supply is not normal, so there is no normal work.

After burning the firmware, click "connect", up and down left and right swing module. The APP will be displayed according to the rules, as shown below:



5. Related information link

The web page explains the brush firmware

<http://url.cn/4BbeJFo>

General brush firmware tool

<http://url.cn/4Bbcuay>

OP firmware

<http://url.cn/4CPuKC7>

OP Ground station

<http://url.cn/4Bbcx0e>

