

Rcexl On Board Glow System Instructions

ITEM:2214

1: The input voltage of the On Board Glow System is 4.5V to 12.6V, and output voltage is divided into two files: 1.4V at the beginning, enhanced stability with 0.8V, conversion efficiency is more than 90%, but it is recommended to be placed in the controller in the ventilated position.

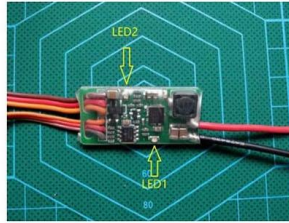
2: The controller has two control modes: signal control through receiver and button control. They have the same control priorities and are independent of each other.

Receiver control:

- ☐ Initiating mode --2.0ms~1.68ms output 1.4V
- ☐ Stabilized mode --1.68ms~1.3ms output 0.8V
- ☐ Shutdown --<1.3ms (including button control) output 0V

Button control:

- ⊙ Initiating mode: After pressing the button momentarily, the controller enters the initiating mode, the button on the indicator lights, and outputs 1.4V voltage at the same time. After 25 seconds, it automatically shuts down and the indicator light is out.
- ⊙ Starting augmentation steady modes: Long press the button (for 3 seconds or above), light starts to blink. Then loose the button, the controller will enter the initiating mode, the light keeping on, outputting voltage of 1.4V. After 25 seconds, the controller will switch to augmentation steady modes, the indicator light blinks slowly, outputting voltage of 0.8V continually.



LED1: the same as button control

LED2: indicates situation of glow system. If the wire in glow system is burnt out, then LED2 turns darker; if the glow system is normal, LED2 is normally on. (The controller should be off when testing.)



get power from receiver



get power from outer battery



connection display (no receiver)