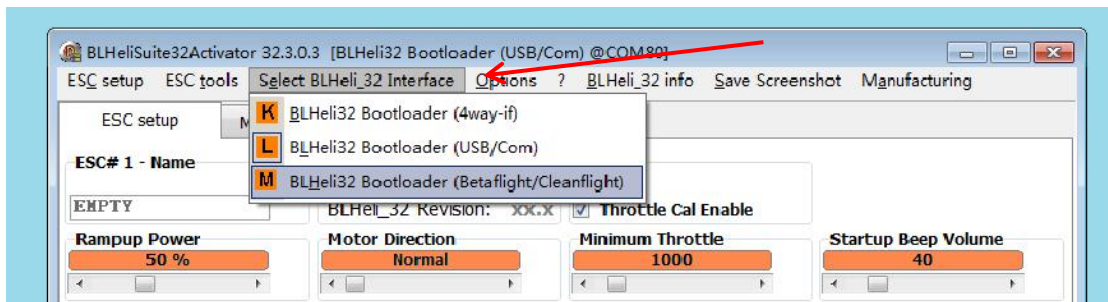


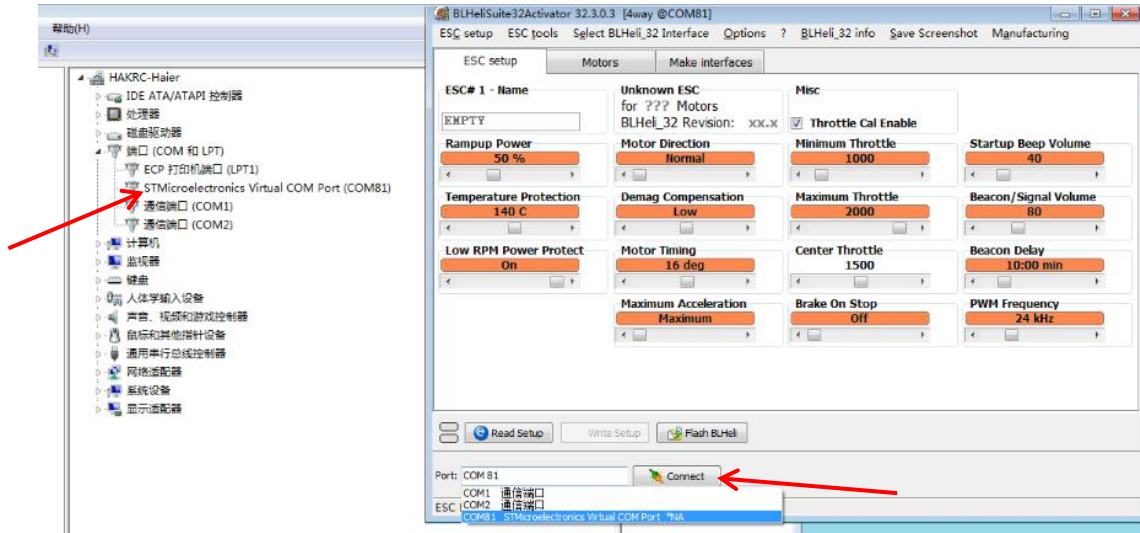
1. Open “BLHeliSuite32Activator” software



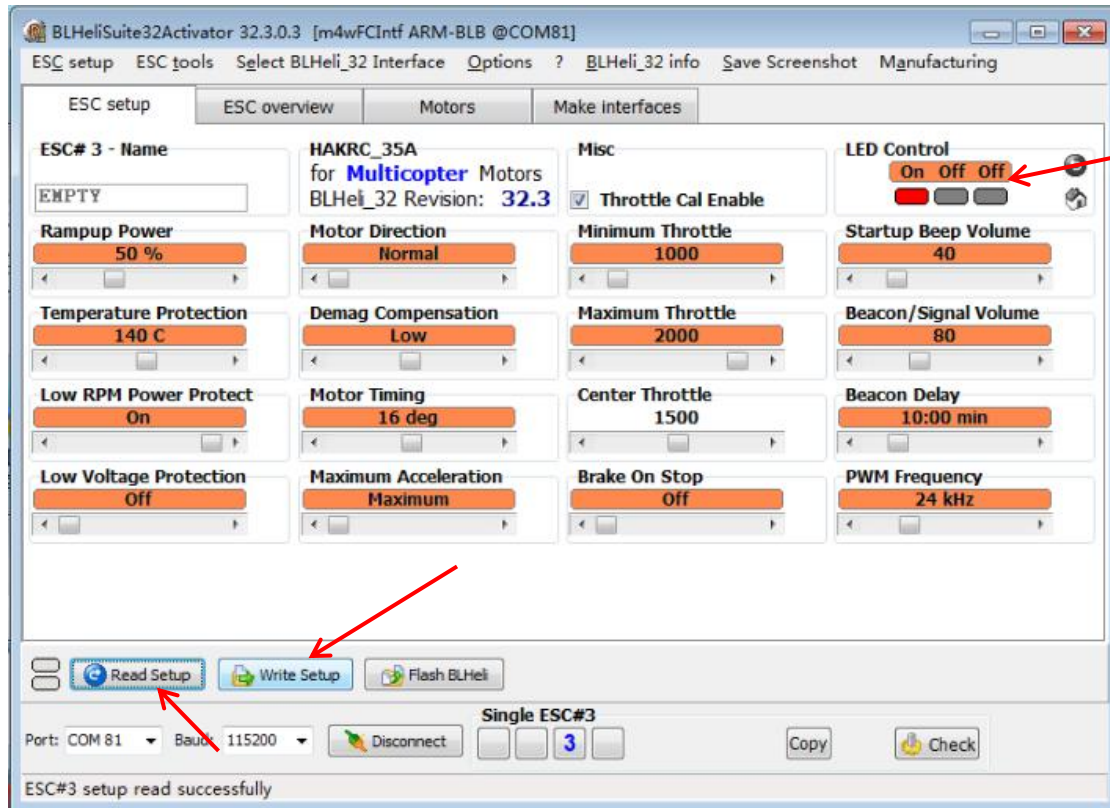
2. Click on “Select BLHeli 32 interface”, flight controller connecting to ESC: choose the third item; using USB: choose the second item.



3. Choose the COM port, then connect. When “connect” change to “disconnect” means success.



4. Change the LED color ①click “Read Setup”, dialogue box “OK” ② “LED control” choose the color ③ click “Write setup”, dialogue box “OK” . succeed.



If you feel that the changed color is not satisfactory, repeat the fourth step.

