

---

# Sky Surfer X8 Install Manual

(Material): Durable EPO

(Wingspan): 1480mm(58.3in)

(Length): 992 mm(39.0in)

(Weight): 690 g(24.4 oz.)

Wing Area: Approx. 24 dm<sup>2</sup>

## Recommended Devices:

2212 kv2450 motor

30A ESC

5\*5 Prop

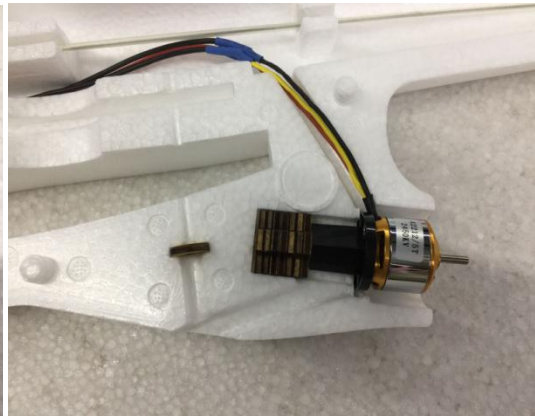
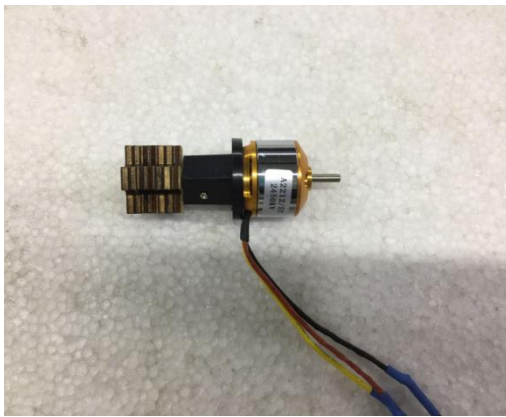
9g Servo \*4

11.1V 2200mAh LiPo Battery

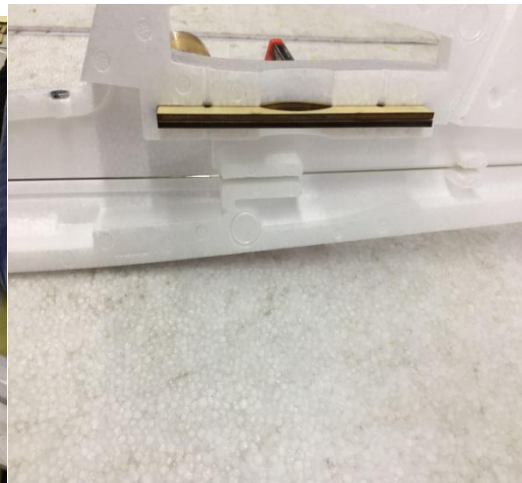
E3 AC Charger

WFLY 6A Transmitter





**Install Motor**



**Glue the rod sleeve, note the screw down**



**Wood glued to the fuselage**



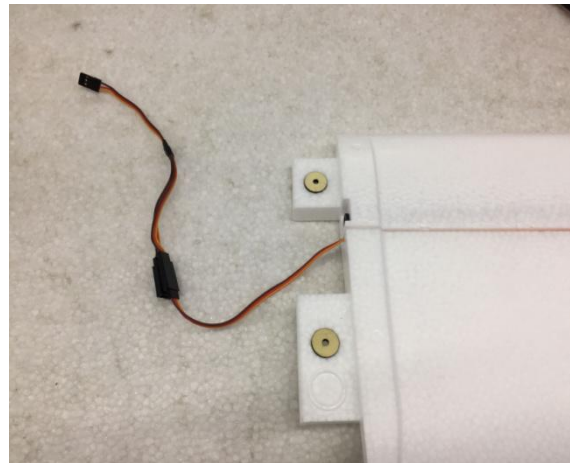
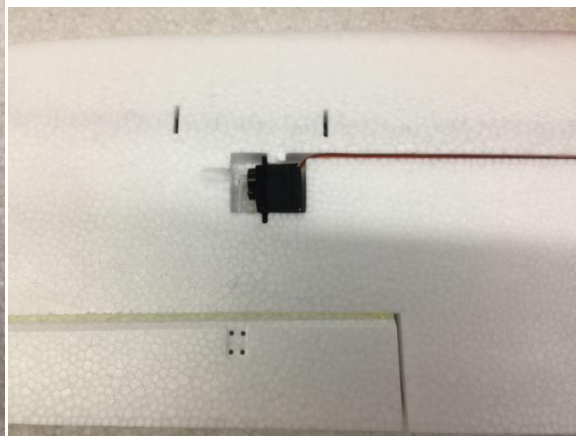
**Glue Wood chips into the cabin**



**Glue the fuselage**



**Install servo and ESC**





**Fix the main wing and the body with a long screw and a washer.**

