

VIRGLASS-V2 VR HEADSET MANUAL

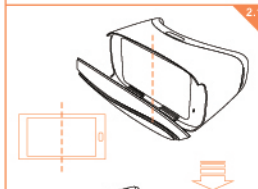
1. APP Download

- 1.1 Scan the QR code to get the 3D player APP.
- 1.2 Start the APP, then play the 3D video.



2. Equipment Directions

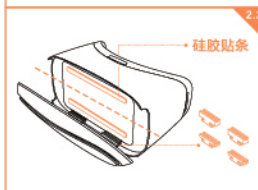
- 2.1 Open the front cover, put the mobile in it and keep the middle line of the mobile to align the middle line of the screen, then close the front cover.



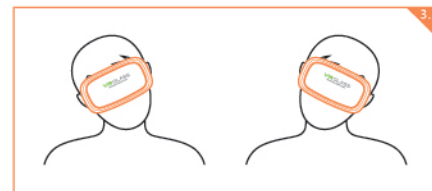
- 2.2 There are 2 different size silicone rubber bands, could be use according to your mobile size. The mobile screen between 4.7-5.0 inch recommended to use the large size rubber band, screen over 5.0 inch we suggest to use the small size rubber band.

HOW TO USE THE SILICONE RUBBER BAND?

Stick the rubber bands balanced on the cover lens's top and bottom for preventing game forced termination when the HOME BUTTON touch the lens.



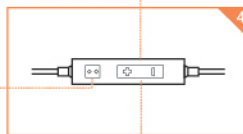
3. Motion control



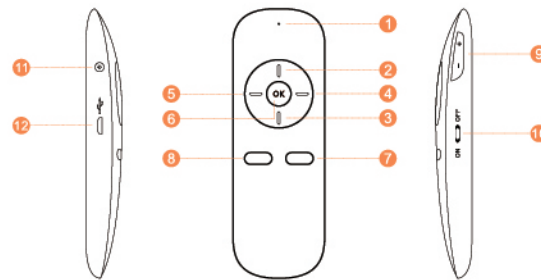
- 3.1 Choose the video
Put the mobile in the equipment, shake your head from side to side to choose the video what you want.
- 3.2 Play the video
The video selected will play after 5 seconds.

4. Wire control

- 4.1 Choose the video
Press the volume button to choose the video.
- 4.2 Play the video
Press the confirm button to play the video.
- 4.3 Playback control
Touch-hold the volume button to fast forward or rewind the video, and press the button to adjust volume. Press the confirm button to stop or play the video.

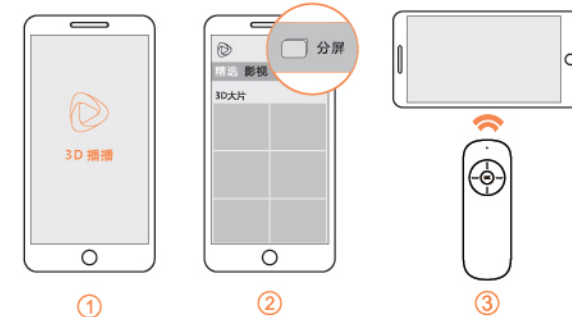


5. Remote control



- | | | |
|-----------------------|-------------------|-----------------------|
| 1 red and blue lights | 5 arrow key: left | 9 volume key |
| 2 arrow key: up | 6 play/stop | 10 ON/OFF button |
| 3 arrow key: down | 7 2D/3D shift key | 11 bluetooth key |
| 4 arrow key: right | 8 back key | 12 charging interface |

- Shift the ON/OFF button to ON to start up.
- Touch-hold the bluetooth key, if the blue light glitter means that the remote control is connecting with your mobile.
- Turn on your mobile bluetooth remote control.
- After successfully connecting, you can use the remote control.



① Start the 3D player APP

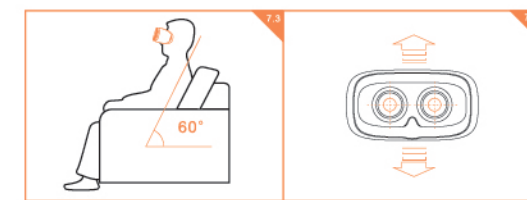
② Click the double-screen button which at the upper left, then put your mobile into the headset.

③ Through the remote control to choose the video you like and enjoy it.

6. Battery charging

- LED condition direction: the red light will keep on when charging, light out when fully charged.
- Charging time: the battery need almost 2 hours to be fully charged.

7. Instructions



7.1 **Don't use the headset when your mobile is charging, any consequences caused by improper usage the user should to take by themselves.**

7.2 For protecting your eyesight, don't use the headset over 30 minutes at a time.

7.3 For increase your comfort level when you're watching videos, you'd better to adjust your sitting position to 60°.

7.4 For getting the best definition, you can make your pupil align at the center of the lens through adjusting the equipment slightly in vertical direction.

