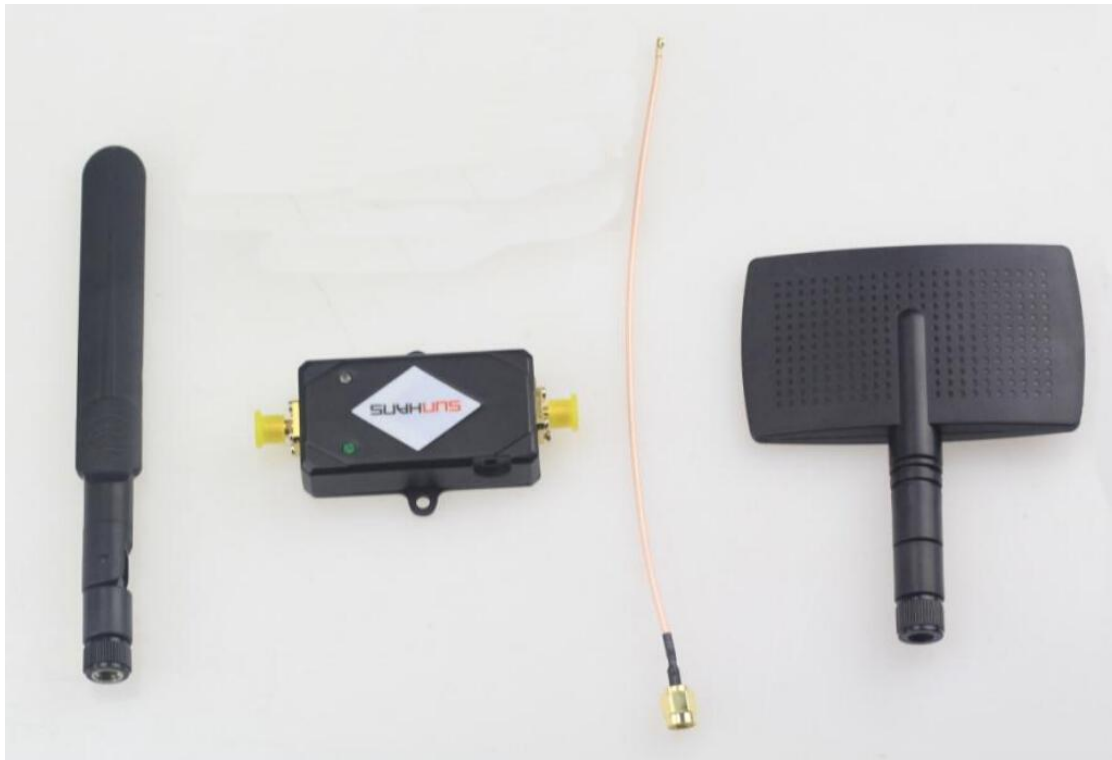


1. Parts list

(1)The suits of 5.8G extended range



(2) The suits of 2.4G extended rang



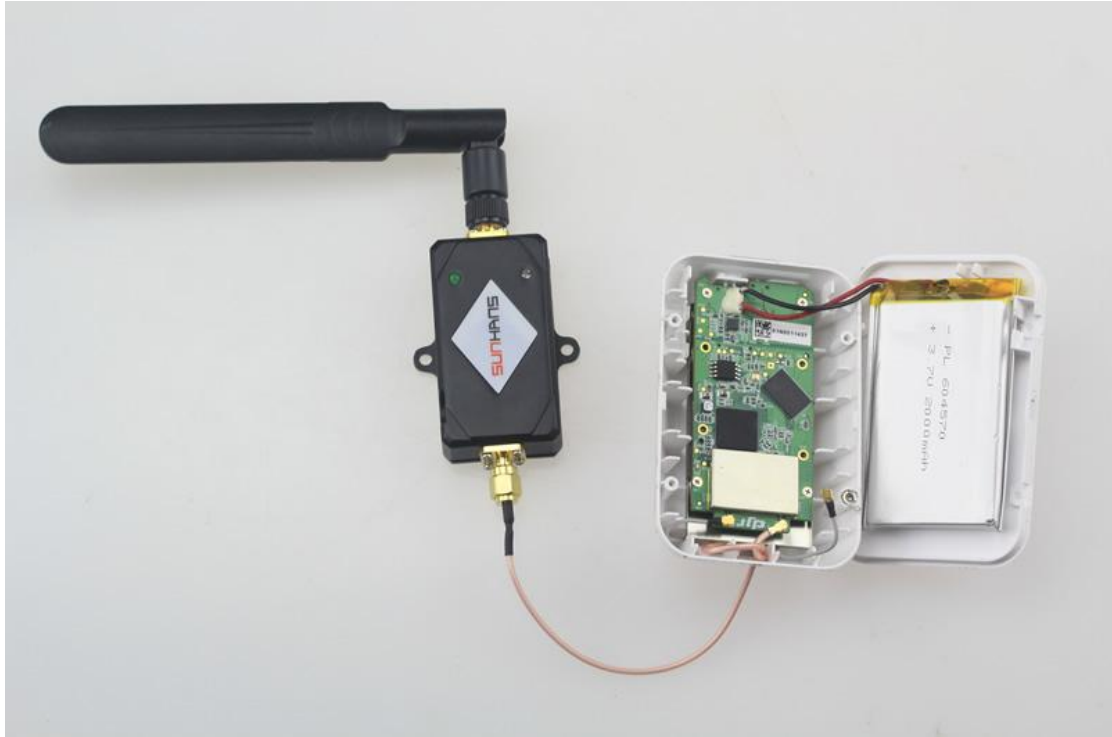
(3) **Form a complete set of battery (it must buy full set then equipped with battery)**



Battery features: 12 v 3000 mw, bring charger, have to meet the protection, not burning power amplifier

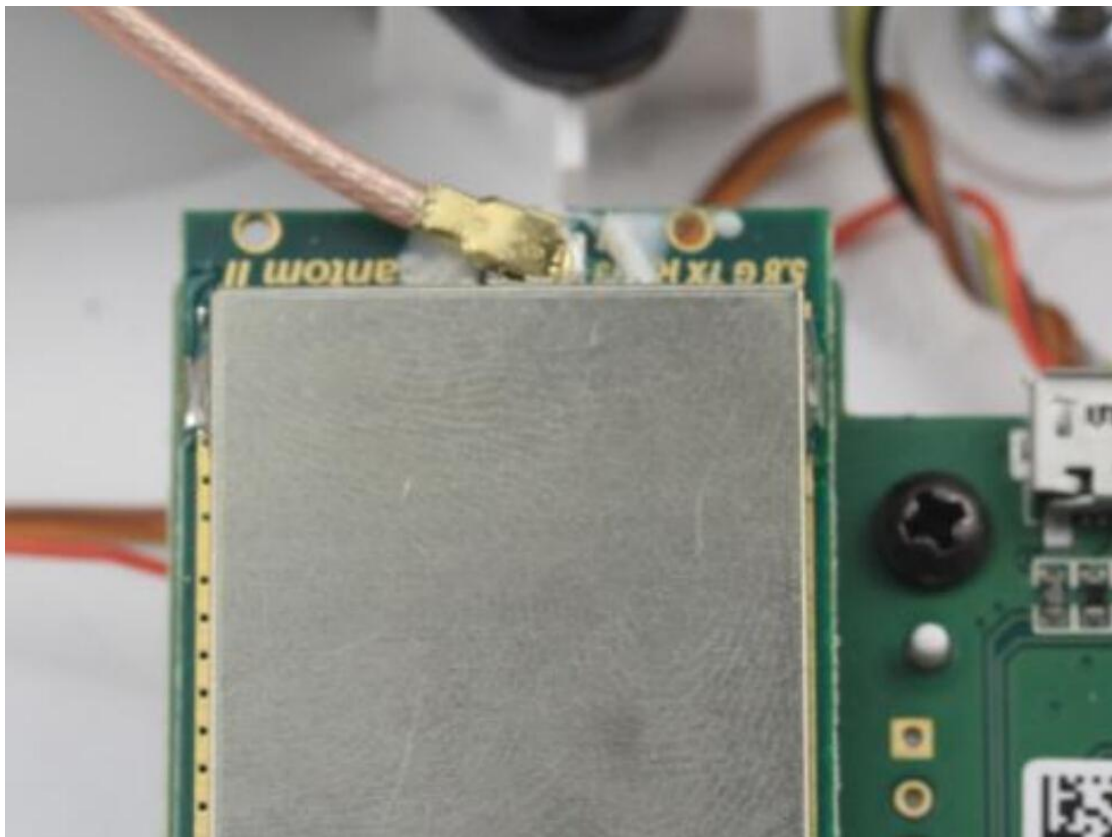
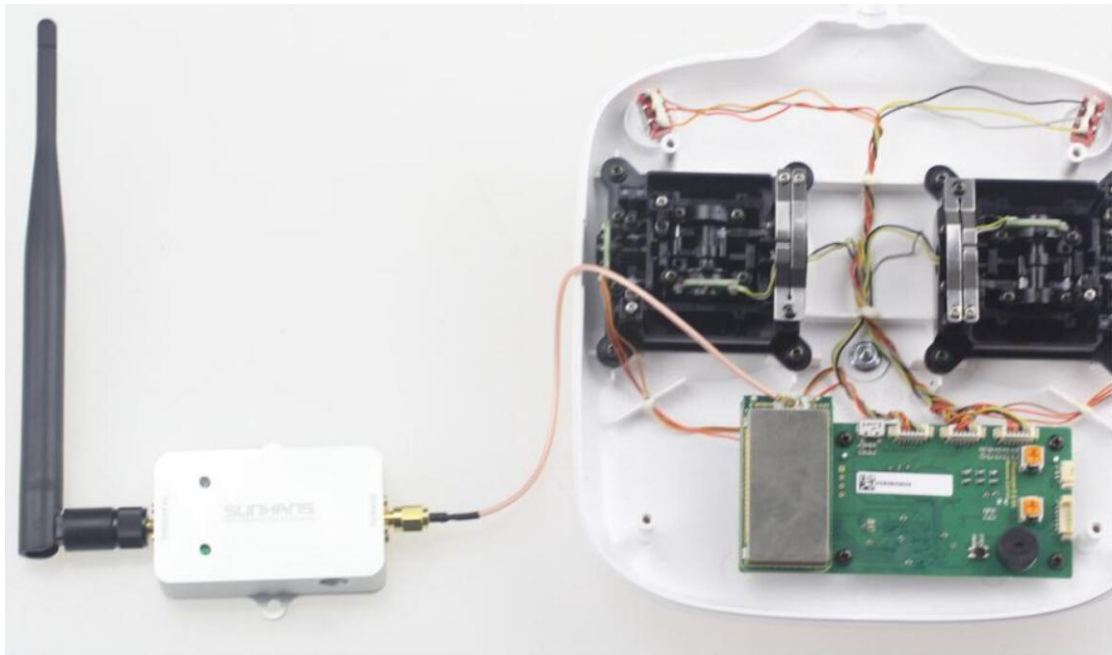
2. The preparatory work

(1) Installation schematic diagram



Here to install just pull out the original antenna (pull out the antenna on the right side, left don't move), and then connect the SMA wire inserted into the wireless bridge, fixed the can. This step needs to be punched

(2) The remote control installation schematic diagram



This step is to install the remote control connections need to take down the original antenna, remove the

antenna, be careful not to damage to the IPX, remove fixed glue first, and then gently remove the antenna. Then put the connection line (the longer one) connect the IPX, then cover on.

2. Matters needing attention and functional description

- (1)** 电池充电，必须把电池上面的开关打开，充电时充电器上两个灯会一起亮（红绿），充满只亮红灯，如下图

Charging the batteries, it is necessary to open the battery switch above, two lights of the charger together with bright(red and green) when charging the batteries, only the red light bright when the battery had be full of , the following figure.



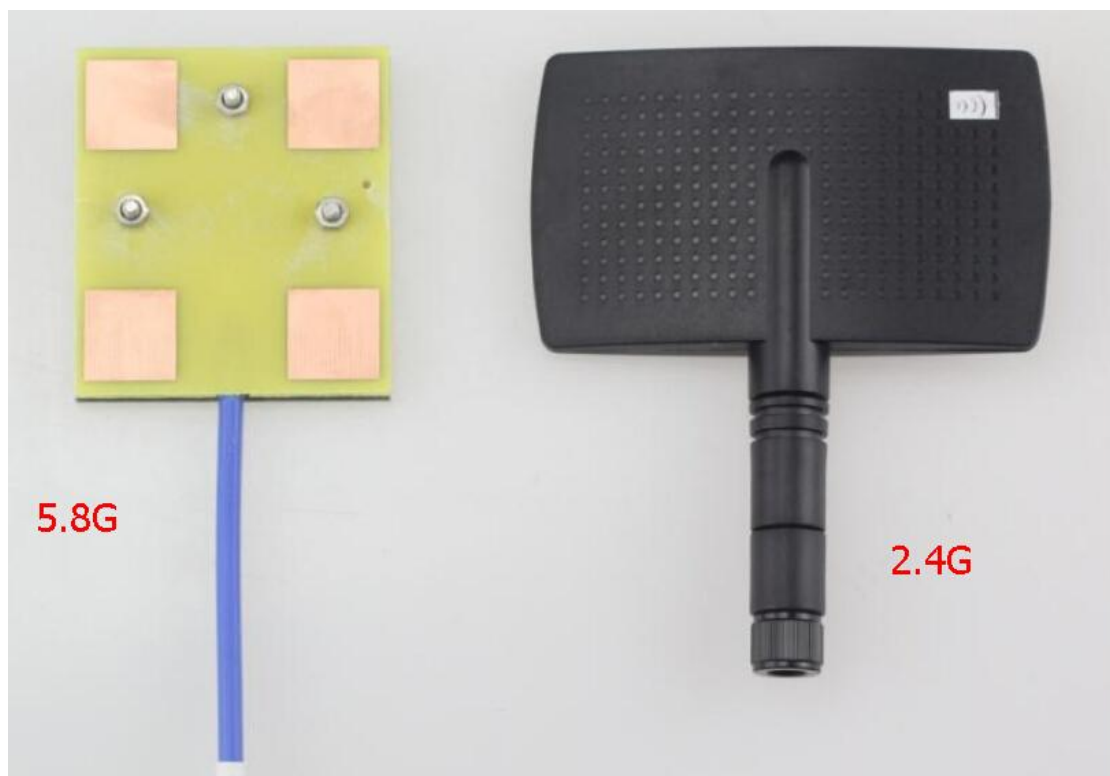
O is turn off, I is open (there have a red light on the left, the left light have no bright if the battery have no any electricity)

(2) 安装后，开启功放前必须将功放的天线安装上，由于功率过大，无天线状态通电容易烧功放

After installation, open the power amplifier of the antenna must be fitted before, due to the large power, power on electricity is easy to burn without antenna amplifier.

(3) 使用定向天线时需要将信号面对准飞机，这样信号可以更远，这就是定向天线的特性。以下图片是信号面

When using the directional antenna need to face the quasi plane signal, this signal can be further, this is the characteristics of directional antenna. The following images is the surfaces of the signal



5.8 G signal is four copper side, 2.4 G signal surface is white icon

(4) 天线不要装混，黑色功放对应的是 2.4G 天线，银色功放对应 5.8G 天线

Antenna don't mix, black amplifier corresponding is 2.4 G antenna, silver power amplifier with 5.8 G antenna

3. Installation and setup process



Installation is simple, does not damage the remote control, convenient tear open outfit

(1) 黑色功放对应 2.4G ， 对应的天线是以下三条
Black power amplifier with 2.4 G, the corresponding antenna is the following three



The longest is power amplifier with omni-directional antenna, it write 2.4G, From left to right in turn is the paddle omni-directional antenna, power amplifier with omni-directional antenna, radar directional antenna.

(2) 银色功放对应 5.8G ， 对应的天线是以下三条
Silver power amplifier with 5.8G, the corresponding antenna is the following three



From left to right in turn is a directional antenna, power amplifier with omni-directional antenna, omni-directional antenna

(3) Built-in antenna comparison chart(自带天线比较图)



4. Instructions of antenna (天线说明)

(1) **Directional antenna** be used means in one or several particular direction in transmitting and receiving electromagnetic waves particularly strong, and in the other direction on transmitting and receiving electromagnetic wave is zero or minimum of a kind of antenna. The purpose of using a directional antenna is to increase effective utilization rate of radiation power, increase confidentiality; The main purpose of using a directional receiving antenna is enhanced signal strength increase anti-interference ability.

[定向天线 (Directional antenna) 是指在某一个或某几个特定方向上发射及接收电磁波特别强，而在其他的方向上发射及接收电磁波则为零或极小的一种天线。采用定向发射天线的目的是增加辐射功率的有效利用率，增加保密性；采用定向接收天线的主要目的是增强信号强度增加抗干扰能力]

(2) Omni-directional antenna, in a horizontal direction figure of 360° is uniform radiation, which is normal omnidirectional, in the vertical direction performance for a certain width of the beam, normally lobe width is smaller, the greater the gain. Omni-directional antenna in a mobile communication system of general application and suburban county district station type, coverage range is big. [全向天线, 在水平方向图表现为 360° 都均匀辐射, 也就是平常所说无方向性, 在垂直方向图表现为有一定宽度的波束, 一般情况下波瓣宽度越小, 增益越大。全向天线在移动通信系统中一般应用与郊县大区制的站型, 覆盖范围大]

(3) Need to use directional antenna when you need to remote flight, when using need to protect the same direction with plane, signal need to face to plane, otherwise the signal attenuation is very severe. [需要远距离飞行时尽量使用定向天线, 使用时需要时刻和飞行保护相同方向, 信号面对准飞机, 否则信号衰减很厉害]

Normal flight using omni-directional antenna is ok, don't put mix the 2.4 G antenna and 5.8 G antenna



Power after connect, the power light illuminated, if the remote control is open the signal light will bright, if the light is not illuminated, said there was no signal, need to check the reason, before turning on the power supply, please ensure the antenna interface has any antenna installation, otherwise easy to burn out the power amplifier, 2.4 G power amplifier as same as shown above (电源接通后电源灯会亮, 如果遥控器开启, 信号灯会亮, 如果信号灯没亮则表示没有信号, 需要检查原因, 接通电源前, 请先保证天线接口有安装任意一款天线, 否则容易烧坏功放, 2.4G 功放也是一样如上图)

5. Complete the show





